



Idaho Lewis and Clark Bicentennial News

Volume 1, Number 1

January 2001

Bicentennial License Plates Go on Sale in Spring

Sacajawea, baby Jean Baptiste "Pomp" Charboneau on her back, seems to smile as she points out the beautiful country of her homeland in the Lemhi Valley. She appears on the new Idaho license plate that will be available for sale in the spring of 2001.

The 2000 Idaho legislature overwhelmingly approved the new plate design, and Governor Dirk Kempthorne signed the legislation into law. Representative Shirley Ringo of Moscow took the lead in passing the legislation. The Governor's Lewis and Clark Trail Committee has designated that revenues from plate sales will support community projects and lasting legacy endeavors.

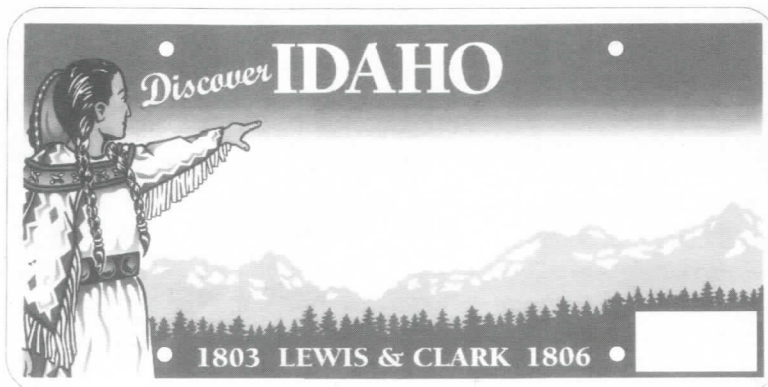
The new four-color plate will honor one of Idaho's most famous former residents while it draws attention to the 2003-2006 bicentennial. Sacajawea played a pivotal role in the Expedition. Having been captured as a young girl, Sacajawea returned in 1805 to her Lemhi Shoshoni homeland. There she met her brother Cameahwait, and assisted in obtaining horses so the Expedition could continue.

In addition to honoring Sacajawea, the license plate recognizes the crucial role American Indians played in the success of the Expedition. Nowhere was that important role more significant than in present-day Idaho. Not

only did the Lemhi Shoshoni provide the horses that enabled the Expedition to continue, on the other side of the mountains a few weeks later, the Nez Perce saved the Corps of Discovery from starvation.

Dustin Holm of Idaho Falls, an inmate at the Idaho Correctional Institution at Orofino, designed the plate, assisted by graphic artists from the Idaho Transportation Department. Governor's Committee chair Charles Knowles appointed a subcommittee of Linda Fee, Sharon Murray, Rose Ann Abrahamson, Anne Schorzman, and Larry Jones to work with Mr. Holm and ITD on the final design.

The plates will cost \$35. Of that, \$25 will go to the Governor's Committee for its use in aiding groups undertaking projects for the bicentennial. The Governor's Committee will also receive \$15 each year a plate is renewed. Personalized plates will be available at an additional \$25. Collector's plates will also be available – and will serve as great gift-giving ideas for friends and relatives who do not own Idaho vehicles. The Clearwater-Snake Lewis and Clark Bicentennial Committee and Clearwater Economic Development Association have provided funding to the Governor's Committee to assist in developing a marketing plan for the plates.



Idaho Lewis and Clark Bicentennial News

Published by the Lewis and Clark Information Center, an office of the Idaho State Historical Society, for the Governor's Lewis and Clark Trail Committee.

The editor is Keith Petersen, assistant editor is Julie Monroe.

The newsletter is produced by University of Idaho Printing and Design, designed by Debbie Matzick.

To be added to the mailing list or for information about the bicentennial, contact Keith Petersen at: The Center, 415 Main Street, Lewiston, ID 83501, 208-799-2249, or keithp@lcs.edu. Office space for the Lewis and Clark Information Center is generously provided by Lewis-Clark State College.

Governor's Lewis and Clark Trail Committee:

Charles Knowles, Chair, 1999-2000
Sue Hottois, Vice Chair, 1999-2000
Anne Schorzman, Chair, 2001-2002
Beryl DeBoard, Vice Chair, 2001-2002
Rose Ann Abrahamson
Ruthann Caylor
James Fazio
Steve Guerber
Otis Halfmoon
Anthony Johnson
Carol MacGregor
Joe Marshall
Brian Miller
Allen Pinkham
Audrey Ponzio
Carl Wilgus
Allison McClintick, liaison to the Governor's Office
Kathy Ruffalo, liaison to the Governor's Office
Keith Petersen, State Bicentennial Coordinator

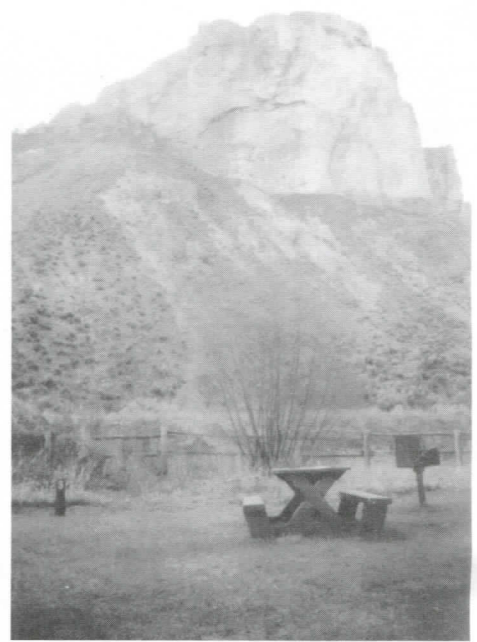
Idaho Chapter News

The mission of the Lewis and Clark Trail Heritage Foundation (LCTHF), headquartered in Great Falls, Montana, is to stimulate public appreciation of the Lewis and Clark Expedition's, contributions to America's heritage and to support education, research, development, and preservation of the Lewis and Clark experience. The LCTHF has 29 chapters, of which the Idaho Chapter is one.

Like the LCTHF, the Idaho Chapter is involved in preservation and education activities. One of the goals of the Chapter for 2001 is the development of teacher workshops about the Lewis and Clark experience, and the distribution to Idaho schools of LCTHF curriculum guides. In 2000 the Idaho Chapter hosted the Idaho legislature at a reception to inform legislators of the upcoming bicentennial and the role of the Governor's Lewis and Clark Trail Committee in the bicentennial planning effort. The Idaho Chapter, which

frequently collaborates with the Oregon and Washington chapters, also cooperated with the refurbishing of the Jean Baptiste Charbonneau (Sacajawea's son) gravesite in Oregon.

Anne Schorzman is Idaho Chapter president; Mike Venso, Vice President; and Brian and Carlena Miller are Secretary and Treasurer. Membership dues are \$10 annually, and prospective members must first be members of the LCTHF (\$30). Those interested in joining the Idaho Chapter or the LCTHF can contact Anne Schorzman by email: SchorzA383@aol.com or mail: 804 E. Pennsylvania, Boise, 83706 and she will provide additional information and forms. The Idaho Chapter issues a quarterly newsletter to keep members up to date on information and activities, and the LCTHF has a quarterly journal, *We Proceeded On*, which is the leading source of the most recent scholarly information about Lewis and Clark.



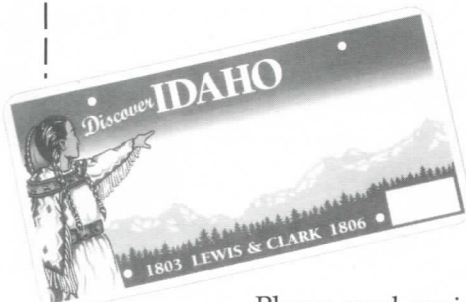
BLM campground at the Tower Rock. The Lewis and Clark campsite will receive a facelift prior to the bicentennial.

BLM Prepares for the Bicentennial

The Salmon Field Office of the Bureau of Land Management is in the midst of planning for the commemoration. A large section of the Trail is under BLM stewardship in the Lemhi Valley, including many significant sites, such as Lewis's first Idaho campsite, the place where the American flag was first unfurled west of the Continental Divide, the Tower Rock campsite, and Discovery Hill outside of Salmon, with its beautiful vistas.

Among the projects contemplated for completion in 2001 are the installation of interpretive and educational kiosks and signs, weed eradication, road upgrades, campground enhancement, fencing, safer automobile turnouts at significant sites, visual improvements, plantings, and maintenance. For more information, contact Pete Sozzi of the BLM in Salmon, 208-756-5404.

On the Clearwater River side of the mountains, the BLM is upgrading the Pink House Recreation Site outside of Orofino. The Pink House site, when completed in the summer of 2001, will be a full-service campground with fifteen RV and three tent sites, along with a day use area with group picnic facilities. For additional information contact LuVerne Grussing of the BLM in Cottonwood, 208-962-3245.



License Plate Ordering Information

Please send me information on ordering the bicentennial license plates.

Name: _____
Address: _____
City: _____ State _____ Zip: _____

Clip and mail to:
Keith Petersen, Lewis and Clark Information Center
415 Main St., Lewiston, ID 83501



The Nez Perce County Historical Museum in Lewiston.

Governor's Committee Assists Museums

With financial assistance provided by the Idaho Heritage Trust, Idaho Humanities Council, and Idaho State Historical Society, the Governor's Committee is developing a plan to assist existing history museums along the Trail as they prepare for the bicentennial commemoration. In November, a professional planning team consisting of Fred Fritchman and Jody Ochoa of the State Historical Society, Gaetha Pace and Fred Walters of Idaho Heritage Trust, Bill McLaughlin of the University of Idaho's Department of Resource Recreation and Tourism, Mary Reed of the Latah County Historical Society, and bicentennial coordinator Keith Petersen toured the existing history museums along the Trail. They met with trustees, staff, and volunteers about needs the museums anticipate as they prepare for the bicentennial, and took behind-the-scenes tours of each facility.

The Governor's Committee will prepare a packet for each museum based upon the planners' impressions of their facilities. Representatives from all the museums will gather in Lewiston early in 2001 along with the planning team in a day-long workshop to further discuss needs.

It is not the intention of the Governor's Committee to change existing museums into Lewis and Clark interpretive facilities. The Committee believes that tourists to Idaho will want to learn other aspects of Idaho history when they are in the state, and the goal of the project is to strengthen the museums and help them prepare for the anticipated visitation.

The existing museums have labored to preserve Idaho's history long before people began to plan for a bicentennial, and they will continue to serve as preservers of their community heritage after the bicentennial is over. The Governor's Committee wants to help ensure that our existing museums flourish.

In addition to individual needs for each museum, the planning team is also working with representatives from the museums on possible joint projects. Among the projects tentatively identified during the planning visits were a joint museum brochure and the need at nearly every facility for computer upgrades.

Working with Senator Larry Craig and his staff, the Committee was successful in earmarking \$125,000 in federal funds to provide assistance to the existing museums in Idaho. The museums participating in the program, either on or adjacent to the Trail, are: Lemhi County Historical Society, Salmon; Lewis County Historical Society, Kamiah; Clearwater County Historical Society, Orofino; Bradbury Logging Museum, Pierce; Nez Perce National Historical Park, Spalding; Lewis-Clark Center for Arts and History, Lewiston; Nez Perce County Historical Society, Lewiston; Latah County Historical Society, Moscow; Appaloosa Horse Club Museum, Moscow; and The Historical Museum at St. Gertrude's, Cottonwood. For further information contact Keith Petersen, state bicentennial coordinator, 208-799-2249.

Lewiston Gateway Grove Dedicated

On October 10, Lewiston dedicated the first of what will be three bicentennial gateway groves in Idaho. With the help of many partners, a once barren site along U.S. Highway 12 will become a place of beauty, shade, recreation, and education for many years to come. The new park includes the plants, shrubs, and trees that Lewis and Clark noted in their journals as they passed through this area.

Funding for the grove came from the USDA Forest Service's State and Private Forestry branch and were delivered by the Idaho Department of Lands in the form of a community forestry grant with matching in-kind and cash funds from various partners, including the City of Lewiston, Army Corps of Engineers, Don Brigham Plus Associates, and the Grubby Knuckles Garden Club.

At the dedication in Lewiston, Sandy Patano of Senator Larry Craig's office presented a check to the City of Salmon to use in the development of the next Gateway Grove. Planting in Salmon is expected to begin in the spring of 2001. Kooskia will be Idaho's other Gateway Grove city. For more on the program contact Charlene Schildwachter of the Forest Service's State and Private Forestry Program, 406-329-3599.



Sandy Patano, from Senator Larry Craig's office speaks at the dedication of Lewiston's Gateway Grove.

Scalise Hired as Bicentennial Planner

In July the Clearwater Economic Development Association hired Victoria Scalise to serve as bicentennial planner for the Clearwater-Snake region. Victoria's office adjoins state coordinator Keith Petersen's office in the Lewis-Clark Center for Arts and History in downtown Lewiston. Victoria will assist communities and businesses in the region as they plan and develop projects for the commemoration. She works closely with regional organizations such as the Clearwater-Snake Lewis and Clark Bicentennial Committee and the North Central Idaho Travel Association. Planning projects currently under way in the area include infrastructure assessment plans, public safety, tourism impact, historical and cultural preservation, and community beautification.

Victoria has an extensive background in marketing, planning, and regional, national and international development. She previously served as marketing director for a national agricultural commodity organization and most recently as director of the Lewis-Clark Valley's Dogwood Festival. You may reach Victoria at 208-792-2607.

Can't Get Enough of that Bicentennial Information?

If you just can't get enough bicentennial news, let us know. State coordinator Keith Petersen does a monthly update of bicentennial activities via email. If you would like to be added to the list to receive the monthly update, contact Keith at keithp@lsc.edu.



The Syringa Lodge in Salmon offers expansive vistas of the Lemhi Valley.

Sacajawea Center Receives Funding

Senator Larry Craig announced in October that the City of Salmon will receive \$1 million in Housing and Urban Development community development funds for the Sacajawea Interpretive and Education Center. The Governor's Committee, working with the Lemhi County Lewis and Clark Bicentennial Committee (LCLCBC), had made the appropriations request, and the Senator and his staff succeeded in obtaining this important funding.

According to Beryl DeBoard, chair of the Executive Board of Directors of the LCLCBC, the goal is to use the funds to purchase an existing building, the Syringa Lodge, a four-story, log, bed and breakfast facility, along with nearly nineteen acres of land on a bench above the city and the Lemhi Valley. The LCLCBC hopes to move some interpretive exhibits into the facility within a year.

The Syringa Lodge will continue to produce income for the Committee, and might or might not be the final facility used for the Sacajawea Center. A future Center could be constructed adjacent to the Lodge, or in another location, or the Lodge could be completely turned over to Sacajawea Center functions.

The Syringa facility offers many exciting interpretive possibilities. From the Lodge, visitors can see from Lemhi Pass to Tower Rock, a large expanse of the Lewis and Clark Trail. Indoor or outdoor interpretation could introduce visitors to the important story of the meeting of the Expedition with the Lemhi Shoshoni, as well as Sacajawea's story. A part of the Syringa property is in a very natural setting, providing opportunities to interpret the landscape as it appeared during the time the Corps of Discovery passed through.

A Sacajawea Center has been a long-term goal of the Governor's Committee as a lasting legacy bicentennial project. It was one of the top two projects of national significance (the other being the expansion of Canoe Camp in Orofino) identified by the Governor's Committee for the National Council of the Lewis and Clark Bicentennial. Congratulations to the LCLCBC and thanks to Senator Craig for this important step in fulfilling this goal. For updates on the Sacajawea Center, contact Beryl DeBoard, chair of the Executive Board of Directors, 208-756-6789.

Weippe Discovery Center

The Weippe Lewis and Clark Bicentennial Committee, City of Weippe, Clearwater County Free Library, and Lewis-Clark State College are partnering on a project to bring a new community library, an LCSC outreach center, and Lewis and Clark interpretation to the City of Weippe in time for the bicentennial.

Weippe is home to one of the most significant sites along the entire Lewis and Clark Trail, the Weippe Prairie, where the Nez Perce Indians met and saved the Expedition in the fall of 1805. It is anticipated that large numbers of tourists will visit the site and the community. At the present time, the only interpretive facilities are two historical markers.

The Weippe Discovery Center addresses the need for greater interpre-

tation of the Lewis and Clark story, as well as longstanding community needs for a larger library and a technology center. The partnering groups have made a down payment on an existing building, the former Assembly of God church, on Highway 11. The location is easily accessible by visitors, and provides ample opportunity for tour bus and RV parking and turnaround.

Fundraising is currently under way to purchase the property and adaptively rehabilitate it. Interpretive panels on the Expedition, along with a map of the Expedition route in the region, will be featured on the exterior of the building. The plans also call for a much-needed public restroom in the Center.

For more information, contact Terri Summerfield, Weippe Lewis and Clark Bicentennial Committee, 208-435-4614.

Public Safety Plans Under Way

In January 2000, Peter Fischer and Mary Hasenoehrl of Senator Mike Crapo's staff organized a meeting of county sheriffs and other officials in Lewiston. As a result of that meeting, Idaho has now become the national leader in planning for safety and law enforcement needs for the bicentennial.

Public safety concerns are wide ranging. Search and rescue needs, emergency room facilities, adequate law enforcement personnel, an upgraded communications system, and collaboration among various federal, state, local, and private agencies are all integral to adequately protecting the public's safety. At the same time, provisions must be made to protect the historic and cultural resources along the Trail.

With funding provided by the U.S. Forest Service, the Clearwater-Snake Lewis and Clark Bicentennial Committee, and the Clearwater Economic Development Association, the consulting group Fire Logistics, Inc. of Montana is developing a needs assessment and public safety strategy that will be completed by the summer of 2001. The plan will identify ways in which Idaho can deal with such things as natural

disasters, fatalities, vehicle accidents, physical injuries, large-scale accidents, and multiple incidents occurring simultaneously. The plan will also incorporate adjoining counties in Montana's Bitterroot Valley.

As a part of the public safety plan, the Governor's Lewis and Clark Trail Committee made a federal appropriations request for \$540,000 for a radio communications system to link Lemhi County, Montana's Bitterroot Valley, and the Clearwater-Snake region. The appropriation, a part of the COPS Technology Program within the Commerce, Justice, and State appropriations bill, passed both houses of Congress, and was recently signed by President Clinton. Developing a reliable system that will enable all levels of law enforcement and safety agencies to communicate with one another is a vital part of protecting the public and the Trail resource as we prepare for the bicentennial. For information on the safety needs assessment contact Cynthia Lane, Lochsa Forest Service District Ranger, 208-926-4274.

Resource Guide Available

State bicentennial coordinator Keith Petersen and Clearwater-Snake bicentennial planner Victoria Scalise have developed an *Idaho Lewis and Clark Bicentennial Resource Guide*. The *Guide* includes a fundraising bibliography and information on seventeen federal, state, and private funding sources that have a proven record of providing funds in small communities in Idaho and/or have expressed a willingness to fund Lewis and Clark projects in Idaho.

The *Guide*, which contains contact information for each funding source, is aimed primarily at people who have not had a lot of experience writing funding proposals. The *Guide* also lists key contacts involved in bicentennial planning in the state. To receive a free copy of the *Guide*, contact Keith Petersen, state bicentennial coordinator, 208-799-2249, or Victoria Scalise, Clearwater region bicentennial planner, 208-792-2607.

Discovery Center of Idaho

The Discovery Center of Idaho in Boise has received a planning grant from the Idaho Humanities Council to develop a plan for a major hands-on exhibit to help people understand the key scientific issues related to the Corps of Discovery. Examples of the kinds of topics that might be exhibited include navigation and map making, food preservation, medicines, watercraft design, weapons and tools, and botanical and zoological descriptions. The Discovery Center of Idaho is a museum for people of all ages, but works especially to have exhibits of interest and value to children. The Center's plans for this significant exhibit provide an opportunity to involve young people in the bicentennial in an entertaining and educational way. For additional information contact the Center's director, Fredrika Clement, 208-343-9895.

Gathering of the Tribes

The Nez Perce Tribe hosted the first national "Gathering of the Tribes from the Lewis and Clark Trail" in Spalding and Lewiston in October. Representatives from twenty tribes that had contact with the Expedition, or through whose lands the Expedition traveled, gathered in Idaho, the largest gathering of tribes to date for bicentennial planning.

Tribal representatives met with federal and state officials and local bicentennial planners. The main message of the meeting was the need for the commemoration to be told from the point of view of both Expedition members and the Indians they encountered, and the importance of Indian peoples telling their part of the story themselves. The Gathering was a time of great friendship and healing, and launched what will be an annual tribal gathering, with next year's meeting being in North Dakota. Congratulations to the Nez Perce Tribe Lewis and Clark Bicentennial Committee (NPTLCBC) for taking the initiative to organize this important meeting. For more information on the Gathering or other NPTLCBC bicentennial plans contact the Tribe's bicentennial coordinator Sharen Stevens, 208-843-2253.

Hells Gate State Park

The visitor's center at Hells Gate State Park in Lewiston is undergoing significant rehabilitation in anticipation of new interpretive facilities inside the center focusing on the natural history of the Lewis and Clark Expedition. New exhibits, hands-on materials, and curricula will be created to inform visitors and school children about the important scientific discoveries of flora, fauna, and geologic features. The exhibits will also communicate the Indian perspective on the Expedition with regards to natural history. In addition to the building rehabilitation, the project will entail improvement of parking lots and pedestrian walkways. For further information contact Paul Kraynak at the Park, 208-799-5015.



Paddlers prepare to launch their authentic dugout canoes on the Clearwater River, near Orofino, in July.

Dugouts on the Clearwater

"Dugouts on the Clearwater" has its roots in a 1997 event, "The Lewis and Clark Experience," that commenced with the construction of dugout canoes, the launching of them from Canoe Camp near Orofino (where the Expedition constructed and launched its canoes on the final leg of the westward journey), and a gala commemoration in Lewiston and Clarkston when the canoes arrived. Luminaries such as Ken Burns, Stephen Ambrose, and Dayton Duncan rode on canoes that first year.

In July 2000, the event was reactivated, with canoes again launched near Canoe Camp, an overnight stay along the Clearwater, and landing at Lewiston. The event was sponsored by the Canoe Camp Canoe Club (CCCC).

The Governor's Lewis and Clark Trail Committee submitted a preliminary proposal to the National Council of the Lewis and Clark Bicentennial to have the event considered as a national "signature" event. The National Council will select a few national showcase events for signature event status. Such status will provide national publicity for the events.

The concept is that Dugouts on the Clearwater will be gradually expanded each year until 2005, the 200th anniversary of the making of the dugouts. Communities and groups all along the river would be invited to participate in a week long or longer event during that bicentennial year.

The Clearwater-Snake Lewis and Clark Bicentennial Committee is considering taking over the leadership of the event in its efforts to achieve signature event status, working with the Governor's Committee and CCCC. It is anticipated that the canoes will be on the river each summer through the bicentennial, providing photo opportunities as well as the chance to learn more about the craft of making and paddling dugouts. For more information contact CCCC president Chuck Raddon, 208-476-3123.

Aid for Community Bicentennial Projects

The same federal appropriation request that made available funding for existing museums also included \$250,000 to assist with the implementation of other bicentennial projects. These funds will be available for Lewis and Clark projects statewide. The Governor's Committee will select a subcommittee to develop project guidelines and select grantees on a competitive basis. The Committee expects to have guidelines available in the spring of 2001.

Senator Larry Craig and other members of the Idaho congressional delegation were instrumental in earmarking these funds which will be used to help communities implement projects as they prepare for the commemoration. The funds will be administered through the Clearwater Economic Development Association. For more information contact Keith Petersen, state bicentennial coordinator, 208-799-2249.

Department of Commerce Publishes New Brochure

In July, Idaho's Department of Commerce published a beautiful sixteen-page brochure entitled, *Lewis and Clark and the Native Peoples of Idaho*. The Department hired historian Carole Simon-Smolinski to write the text, which was thoroughly reviewed by a group of volunteers from around the state. For the first time, the brochure encompasses the Trail in the entire state. Previously, the Department of Commerce had produced separate brochures for Lemhi County and the Clearwater region. The new brochure tells the story of the Expedition from the point of view of both the Corps of Discovery and the Indian people the Corps encountered. The brochure, already in its second printing, has proven to be popular with both travelers and people who just want to learn more about the Expedition. For further information contact the Department of Commerce, 800-635-7820.

Kamiah Long Camp/Riverfront Park

With the exception of time at Forts Mandan and Clatsop, the Expedition spent more time at Long Camp among the Nez Perce than with any other native peoples. Having grown weary of the dreary Oregon coast weather over the winter of 1805-06, the Corps of Discovery left Fort Clatsop early and journeyed east. When they reached present-day Kamiah, they established their Long Camp and waited for mountain snows to melt before proceeding on.

Kamiah's Long Camp/Riverfront Park project commemorates this meeting of two cultures. The project is multi-faceted, consisting of an entry sign, an informational kiosk, improved parking, a loop interpretive and nature trail, lighting, sidewalk improvements, and the development of a performing arts stage adorned by murals representing the meeting of cultures.

The project will depict the heritage of the Nez Perce and tell the story of the Expedition at Long Camp in 1806. The performing arts stage will be used for community presentations depicting the meeting. Plantings in the park, including those identified by the Expedition as being in the vicinity in 1806, have been undertaken by volunteers. Federal Highway Administration funds, administered through the Clearwater Economic Development Association, are in hand to undertake many of the project components.

The Governor's Lewis and Clark Trail Committee has earmarked \$76,000 in Housing and Urban Development funds that will be used to complete the Riverfront Park project. The HUD funds will be used to construct the performing arts stage, including murals, and to construct a traveler's informational kiosk.

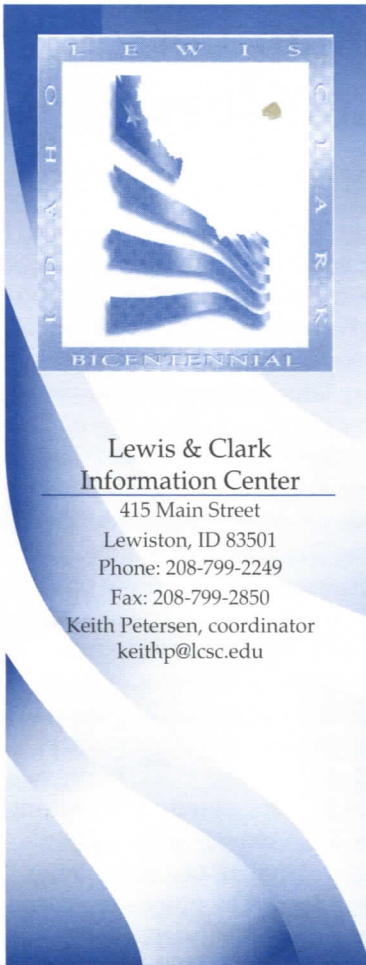
Help!

If you are still hanging in there reading this newsletter, it should be clear by now that there is a lot going on in Idaho for the bicentennial. Hundreds of people are already involved in bicentennial planning. One of the major goals of the Idaho State Historical Society and the Governor's Lewis and Clark Trail Committee in hiring a state coordinator was to have a channel for information sharing. In order to keep all the many people from all the many different entities involved in bicentennial planning moving along together, it is important that we all share information. So, here is the plea:

Please don't think you will burden me if you keep me up to date on your plans. I need to hear from local groups, state and federal agencies, tribes, local governments—anyone who is planning for the bicentennial.

You can reach me at: Keith Petersen, **Keith Petersen**
Coordinator, Idaho Lewis and Clark Bicentennial
415 Main Street, Lewiston, ID 83501
208-799-2249 keithp@lcsc.edu

keithp@lcsc.edu



**Lewis & Clark
Information Center**

415 Main Street
Lewiston, ID 83501
Phone: 208-799-2249
Fax: 208-799-2850
Keith Petersen, coordinator
keithp@lsc.edu

Some Upcoming Bicentennial Events

The Idaho Chapter of the Lewis and Clark Trail Heritage Foundation will meet at the home of Ruthann Caylor, 319 Hulbe St., Boise, **January 13** at 2:00 p.m., with an optional field trip to the gravesite of Jean Baptiste Charboneau on **January 14** at 11:00 a.m.
Contact: Anne Schorzman, 208-345-8371.

Governor's Lewis and Clark Trail Committee meeting, Idaho State Historical Society Museum, Boise, **January 15.**
Contact: Keith Petersen, 208-799-2249.

Intergovernmental Advisory Bicentennial Committee meeting, Idaho State Historical Society Museum, Boise, **January 16.**
Contact: Keith Petersen, 208-799-2249.

Annual Planning Meeting of the National Council of the Lewis and Clark Bicentennial, Omaha, Nebraska, **April 24-27.**
Contact: National Council, 1-888-999-1803.

Idaho Governor's Conference on Tourism and Recreation (with a significant number of bicentennial-related panels), Lewiston, **May 2-4.**
Contact: Carl Wilgus, Department of Commerce, 208-334-2470.

Annual Lewis-Clark State College Lewis and Clark Symposium, Lewiston, **June 28-30.**
Contact: Elizabeth Rawls, 208-792-2282.

Annual meeting of the Lewis and Clark Trail Heritage Foundation, Pierre, South Dakota, **August 5-8.**
Contact the Foundation, 800-701-3434.