

Libraries to Receive Lewis and Clark Materials

When the Governor's Lewis and Clark Trail Committee developed its strategic plan in 1999, it identified providing Lewis and Clark-related materials to libraries along the Trail as one of its lasting legacy goals. With funds from the National Park Service's Challenge Cost Share Program, the Idaho State Historical Society's Lewis and Clark Information Center, and the VALNet Regional Library Consortium, the Governor's Committee in 2001 will purchase \$12,000 worth of materials for public, school, and academic libraries in Trail communities as part of its Library Initiative. The Committee intends to continue the program in future years.

To help develop a list of suitable materials, the Committee called upon a number of Lewis and Clark experts. Barb Kubic, president, and Steve Lee, treasurer of the Lewis and Clark Trail Heritage Foundation; Anne Schorzman, chair, and Charles Knowles, former chair of the Governor's Committee; James Fazio of the National Council of the LC Bicentennial; and Otis Halfmoon of the National Park Service—along with librarians themselves—all provided input into the process.

The result was a list of 32 books, videos, and CDs to be purchased. The list was then sent to libraries, and librarians searched their holdings for items they would like to have for their collections. All materials will be purchased in multiple copies. The most popular title proved to be Janis Herbert's *Lewis and Clark for Kids*, with sixteen

libraries requesting copies.

Materials being made available include scholarly works, works for children, fiction and non-fiction, videos, and CDs—the musical CD *Sounds of Discovery* was the second most requested item. The selection committee made sure that Idahoans were well represented, with works by Jim Fazio, Julie Fanselow, Wilmer Rigby, Carol MacGregor, and Allen Pinkham being donated to libraries.

In addition to the VALNet libraries in the Clearwater/Snake area, the Salmon Public Library is also participating in the Initiative.

The Lewiston City Library, under the leadership of library director Dawn Wittman, ordered the materials. VALNet professional librarians will process and catalog the materials and ship them out. They should be on library shelves by the fall of 2001. Special thanks go not only to Dawn, but also to Paul Krause, Director of Library Services at Lewis-Clark State College, for assistance on the project.

Noted Governor's Committee chair Anne Schorzman, "The bicentennial will be important for what we do during the commemoration, and for the legacy we leave behind. It is hard to imagine a more significant lasting legacy than making our libraries better."

For additional information about the Governor's Committee Library Initiative, contact state bicentennial coordinator Keith Petersen at 208-792-2249.



photo: courtesy of Dawn Wittman

Kay Barnett, left, and Delores Schumadeka, Friends of the Lewiston Library, assist with the processing of LC materials purchased as part of the Library Initiative.

Idaho Lewis and Clark Bicentennial News

Published by the Lewis and Clark Information Center, an office of the Idaho State Historical Society, for the Governor's Lewis and Clark Trail Committee.

The editor is Keith Petersen, assistant editor is Julie Monroe.

The newsletter is produced by University of Idaho Printing and Design, designed by Debbie Matzick.

To be added to the mailing list or for information about the bicentennial, contact Keith Petersen at:

The Center, 415 Main Street, Lewiston, ID 83501, 208-792-2249, or keithp@lcsc.edu. Office space for the Lewis and Clark Information Center is generously provided by Lewis-Clark State College.

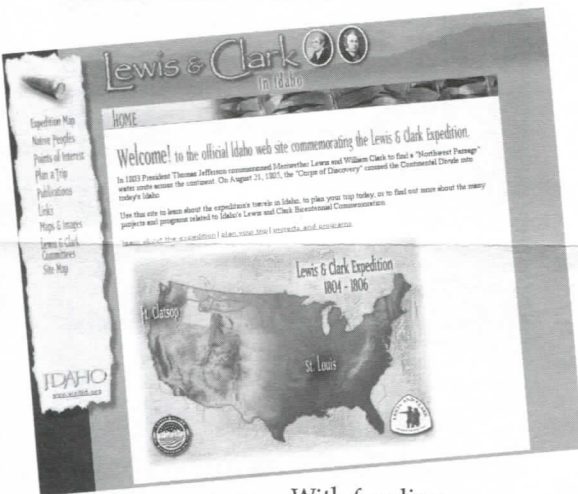
Governor's Lewis and Clark Trail Committee:

*Anne Schorzman, Chair
Beryl DeBoard, Vice Chair
Rose Ann Abrahamson
Ruthann Caylor
James Fazio
Steve Guerber
Otis Halfmoon
Gary Hanes
Hobby Hevewah
Charles Knowles
Carol MacGregor
Joe Marshall
Brian Miller
Jennifer Oatman-Brisbois
Allen Pinkham
Audrey Ponzio
Carl Wilgus
Allison McClintick, liaison to the Governor's Office
Kathy Ruffalo, liaison to the Governor's Office
Keith Petersen, State Bicentennial Coordinator*

Idaho Website Up and Running

The Idaho Department of Commerce's Lewis and Clark website is up and running. At the site you can find maps of the expedition route in Idaho, historical background, and trip planning information. One of the most enjoyable parts of the site is the Points of Interest, where you can click on various points on the map to learn about local museums, visitors centers, historical signs, and other regional points of interest.

The site also includes links to chambers of commerce, travel associations, recreation areas, national forests, state parks, and a variety of other sites, as well as www.visitid.org, the state's main travel/tourism website.



With funding provided by the Idaho State Historical Society's Lewis and Clark Information Center, the Department of Commerce also made this the site that will help keep those involved in planning the bicentennial "in the know." A button for "Lewis and Clark Committees" provides one-click-away access to minutes, updates, and other useful information from the Governor's Lewis and Clark Trail Committee, the Lewis and Clark Information Center, the Lemhi County Lewis and Clark Bicentennial Committee, and the Clearwater-Snake Lewis and Clark Bicentennial Committee. From here there is also immediate email access to state bicentennial coordinator Keith Petersen. The site has been more than a year in the planning. Take a tour at www.lewisandclarkidaho.org to view the results.

Bicentennial Planning Projects Funded

In 1999, Senator Larry Craig and the other members of the Idaho congressional delegation earmarked a direct congressional appropriation of approximately \$450,000 to assist the Clearwater/Snake region in planning for the bicentennial. The funds have been used in a wide diversity of planning projects, and now, two years later, many of the projects have moved from the planning stage to the implementation stage as Idaho prepares for the commemoration.

Administered by the Clearwater Economic Development Association (CEDA), the funds have been disbursed in a competitive application process. A joint "Board-to-Board" subcommittee made up of representatives of the board of CEDA and the Clearwater-Snake Lewis and Clark Bicentennial Committee decided upon the merits of applications and awarded the funds.

Planning projects funded by this appropriation fall under several categories, including infrastructure assessments, public safety assessments, tourism, and other bicentennial planning. Among the planning projects funded:

- Regional waste management assessment to analyze the preparedness of existing waste management and disposal systems to accommodate increased bicentennial visitation.
- Public safety plan to identify public safety problems, seek funding, and collaborate between Lemhi County in eastern Idaho, the four Trail counties in the Clearwater region, and the intervening counties in Montana.
- North Central Idaho Travel Association to develop a marketing plan to address opportunities afforded by the bicentennial.
- Lenore Community Activity Center to assist in highlighting significant historic sites in the community to aid bicentennial visitors in learning more about the area.
- Governor's Lewis and Clark Trail Committee to develop a marketing plan for the bicentennial license plate.
- Weippe Bicentennial Committee to complete plans for the Weippe Discovery Center.
- Kooskia Chamber of Commerce to plan a regional centralized information and resource center to assist the Clearwater region in preparing for bicentennial visitation.
- Clearwater-Snake Bicentennial Committee to develop plans for an annual festival (The Festival of Discovery) encompassing many communities in the Clearwater region prior to and through the bicentennial years.
- Orofino Chamber of Commerce to plan for a community event highlighting the Corps of Discovery's recreational activities.

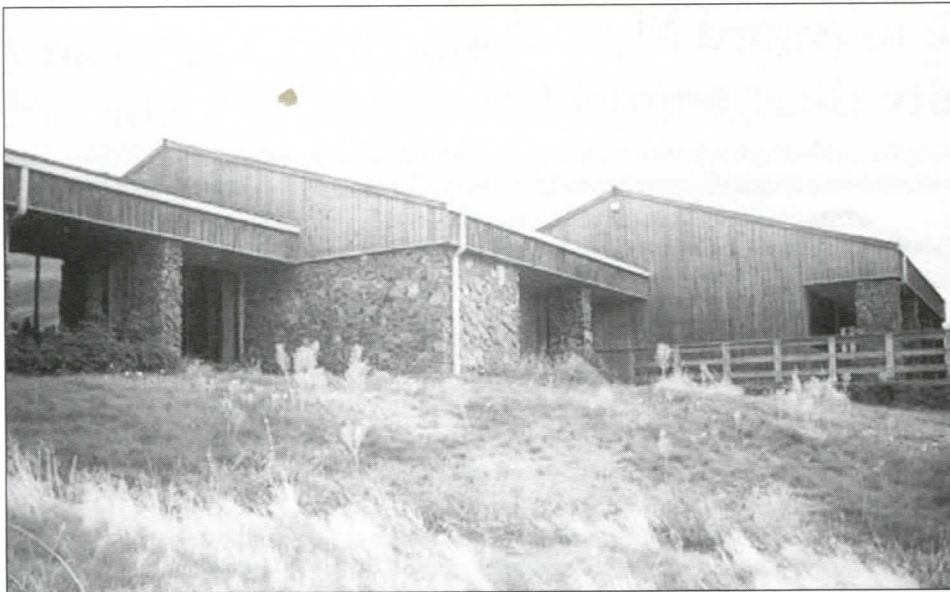
In all, 24 planning projects have been funded. For more on these planning activities, contact Clearwater regional bicentennial coordinator Victoria Scalise at 208-792-2607.

New Lewis and Clark Trail Heritage Chapter Founded

Idaho now has two chapters of the National Lewis and Clark Trail Heritage Foundation. A Sacajawea Chapter formed in April in Salmon, made up of local Lewis and Clark scholars and enthusiasts.

The purpose of the new chapter is to allow local members to participate in Lewis and Clark activities without journeying to Boise for meetings of the Idaho Chapter. The new chapter plans to share activities with both the Camp Creek and Dillon chapters in Montana.

The first activity of the new chapter was a presentation by Ron Laycock on the role of women in the Expedition. Chapter members also participated in a hike over the Clark Reconnaissance route along the Salmon River. Many future excursions are being planned. For further information contact Cheryl Hart at 406-495-0319.



The Interpretive Center at Hells Gate State Park.

Hells Gate to have Lewis and Clark Interpretive Center

The 2001 Idaho legislature approved more than \$750,000 in funding to the Idaho Department of Parks and Recreation to renovate the existing Hells Gate State Park visitors center in Lewiston into a Lewis and Clark interpretive center. Work began in the summer of 2001, and the new interpretive facility, one of the centerpieces of the Idaho bicentennial commemoration, will be completed in the spring of 2003.

According to park manager Mike McElhatton, the theme will focus on the interaction of the Lewis and Clark Expedition with the natural environment. "The majority of exhibits will be interactive, with hands-on activities in which visitors can put themselves into the place of Lewis and Clark," McElhatton noted.

The funding will provide for renovation of the existing building, improvements in signage and vehicular and pedestrian access, and the development of new exhibits. The National Park Service Challenge Cost Share Program will also contribute funding for the exhibits, and Hells Gate State Park is partnering with Dworshak National Fish Hatchery in constructing some of the exhibits at Hells Gate, as well as satellite exhibits at Dworshak.

For more information about the new interpretive center, contact Hells Gate park manager Mike McElhatton at 208-799-5015.

Public Safety Plan Receives Funding

County sheriffs in the five Idaho Trail counties, along with their counterparts in three Montana counties and U.S. Forest Service personnel, formed a bicentennial public safety committee last winter to begin preparations for wide-ranging needs entailing search and rescue, emergency service, law enforcement, and communications. Utilizing bicentennial planning funds, the sheriffs' public safety committee hired Fire Logistics, Inc. of Montana to develop a needs assessment and public safety strategy, which was completed in the summer of 2001.

The plan calls for collaboration among federal, state, county, city, tribal, and other entities involved in public safety; sharing of resources; and substantial efforts to increase support for public safety efforts.

Thanks to the outstanding assistance of Senators Mike Crapo and Larry Craig and their staffs, the Idaho Governor's Lewis and Clark Trail Committee sought and received a direct congressional appropriation of nearly \$550,000 to develop a

Lewis and Clark Artifacts to Come to Idaho

Thanks to the efforts of Senator Mike Crapo and his staff, particularly Peter Fischer, Idaho will temporarily be home for a sampling of plants collected by the Corps of Discovery in what is now Idaho. This rare loan will be made by the Academy of Natural Sciences in Philadelphia. The exhibit will be at the Idaho State Historical Museum in Boise in 2005 and 2006.

According to State Historical Society director Steve Guerber, the plants will be the cornerstone of a major project that includes the large exhibit at the state historical museum, hands-on crafts demonstrations outside, and a traveling Lewis and Clark exhibit. Because of the unique nature of the plant specimens, the Society will develop additional temperature and humidity control measures and security. The Society's exhibit will feature the role of the Expedition in Idaho history. Included in that exhibit will be one of the original peace medals distributed by the Expedition to Indian people. This, another rarity, is in the permanent collection of the Society.

The specimens coming from Philadelphia are some of the most important plants ever collected in America. Thirty-two percent of the plants collected by the Expedition came from Idaho. Idaho will especially request that the syringa specimen taken back east by Lewis and Clark be a part of the exhibition. According to Gary Moulton, editor of the multi-volume *Journals of Lewis and Clark*, "No other collection of North American plants has so much importance from the standpoint of both history and science." This outstanding loan will make the Idaho State Historical Society one of the important focal points nationally for those seeking information about Lewis and Clark during the bicentennial.

For more about the Society's plans for the Boise and traveling exhibits, contact Ken Swanson or Jody Ochoa at the Museum at 208-334-2120.

Governor's Committee to Award More than \$300,000 in Community Bicentennial Grants

The Governor's Lewis and Clark Trail Committee, utilizing funds from a direct congressional appropriation, the Idaho legislature, and the Bonneville Power Administration, will in 2001 award more than \$300,000 in its first Bicentennial Community Assistance Grants Program.

The Governor's Committee approved application guidelines at its meeting in May, and more than 100 application forms were sent out to communities, tribes, bicentennial committees, and non-profit groups. Governor's Committee chair Anne Schorzman appointed an eight-person grant review subcommittee that will review and evaluate the applications in a competitive review process. The grant review subcommittee will make recommendations to the Governor's Committee, which will make the final decisions on awards at its meeting in Salmon in September.

The grants, which will be allocated in amounts of a minimum of \$1,000 to a maximum of \$25,000, must be for projects that clearly relate to Lewis and Clark bicentennial activities. Funds cannot be used for land acquisition or major building construction, but can be used for a wide variety of other purposes, ranging from interpretive signage to brochure development to helping to fund bicentennial events.

The Governor's Committee has requested additional funding from the state legislature and has sought the assistance of Idaho's congressional delegation in obtaining further direct congressional appropriations so that the Bicentennial Community Assistance Grants Program can continue and expand through the bicentennial years. "We are actively engaged in inviting the nation to visit Idaho during the bicentennial," stated Schorzman. "Yet the Trail passes through communities that have been very hard hit economically in recent years. The Community Assistance Grants Program is aimed at helping these communities prepare for the bicentennial in a way that improves their areas, helps them take advantage of the economic benefits of cultural tourism, and enhances the opportunities for tourists to enjoy our state. It is one of the most important efforts the Governor's Committee is undertaking."

For further information, contact state bicentennial coordinator Keith Petersen at 208-792-2249.



Museum consultants Fred Walters, Fred Fritchman, Mary Reed, Jody Ochoa, and Bill McLaughlin hard at work in Pierce.

Initiative Assists Museums Along the Trail

The Governor's Lewis and Clark Trail Committee's Museum Initiative is off to a great start. Over the winter, ten history museums along the Trail participated in a planning project aimed at assisting them in preparing for visitors coming to Idaho for the bicentennial. The planning efforts did not focus on turning these museums into Lewis and Clark interpretive facilities. Rather, the Governor's Committee hopes that the museums will be more accessible during the bicentennial so

that travelers to the region will learn more about Idaho both before Lewis and Clark arrived and after they left.

Like its Library Initiative, the Governor's Committee Museum Initiative aims to assist existing facilities and to leave a lasting legacy of the bicentennial by helping to make the museums better than they were before the bicentennial began.

In addition to sending a consulting team to each museum, the Museum Initiative also will provide nearly

\$14,000 in funding for each museum in 2001 to develop projects aimed at helping them prepare to meet increased tourism demands. Among the projects to be undertaken are development of websites to provide historical and travel information about facilities; new exhibits; improved restroom facilities; improved storage facilities for museum artifacts; video presentations; improved signage; and a host of other projects that will greatly enhance these facilities.

In addition, the Idaho State Historical Society's Lewis and Clark Information Center is teaming with the North Central Idaho Travel Association to develop 20,000 copies of a four-color brochure featuring the museums. The brochure will be available at numerous locations in Idaho to assist travelers. The Governor's Committee hopes to continue providing professional and financial assistance to the existing museums throughout the bicentennial, and is working with Senator Larry Craig and the Idaho congressional delegation to seek continued funding for the program.

For more on the Museum Initiative, contact state bicentennial coordinator Keith Petersen at 208-792-2249.

Challenge Cost Share Provides Funding for Idaho Projects

The National Park Service's Challenge Cost Share Program provides matching funds to non-federal organizations for projects that enhance protection, interpretation, or recreation at sites along the Lewis and Clark Trail. All projects are reviewed by NPS staff, and funding is awarded on a competitive basis. In 2001 the Challenge Cost Share Program was able to distribute \$1 million in Challenge Cost Share funds. It is anticipated that funding for the program will increase substantially in 2002. The application deadline will be in December.

In 2001, NPS provided Challenge Cost Share funding for the following projects in Idaho:

* Idaho Governor's Lewis and Clark Trail Committee for its Library Initiative to purchase books, CDs, and videos for libraries along the Trail.

* Idaho Department of Parks and Recreation to enhance the Living Stream exhibit at the new Hells Gate Lewis and Clark Interpretive Center and to develop cooperative educational exhibits between the Park and Dworshak National Fish Hatchery.

* Idaho Department of Commerce to reprint the *Lewis and Clark and the Native Peoples of Idaho* brochure and to assist with the development of the state Lewis and Clark bicentennial website.

* Weippe Bicentennial Committee to assist with the development of Lewis and Clark interpretive materials at the new Weippe Discovery Center.

* Weippe Camas Festival to assist with the festival.

* Nez Perce Tribe to assist with a cleanup along the Trail.

To learn more about the Challenge Cost Share program and receive application materials, contact the Lewis and Clark National Historic Trail headquarters of NPS in Omaha, 402-514-9311, or you may also contact state bicentennial coordinator Keith Petersen at 208-792-2249. Hopefully, Idahoans will submit more applications this year. If you decide to submit a proposal, please keep Petersen informed, and talk to him to see if the Idaho Lewis and Clark Information Center and/or the Governor's Lewis and Clark Trail Committee can be of assistance in your efforts.

Placemats Are in Use

It started out as a dream by two local bicentennial planners, and now it is, literally, a production of a million. And if you have been dining out in Idaho recently, you might have seen them.

Cheryl Hart, chair of the Lemhi County Bicentennial Committee, and Moe Pare, chair of the Orofino Bicentennial Committee, both came up nearly simultaneously with the idea of developing a Lewis and Clark placemat to be used by local restaurants. They started corresponding with one another, and it seemed that the best approach would be to collaborate on a single placemat that incorporated all of the Trail in Idaho.

At that point, a host of entities got involved, spearheaded by Celeste Becia at the Idaho Department of Commerce. With funding provided by the United Dairymen of Idaho, Idaho Travel Council, Idaho Department of Parks and Recreation, and the Idaho State Historical Society's Lewis and Clark Information Center, the result is a project that produced a million placemats and has seen them distributed to restaurants throughout the state.

The placemats feature a colored map of the Trail from Lemhi Pass to Lewiston, and highlight more than three dozen points of interest along the way. Demand for the placemats has been brisk, with nearly 900,000 requested by dining establishments within a month of availability. The plan is to keep the placemats in print throughout the bicentennial as a way of assisting residents and tourists in their bicentennial travels.

For more about the placemat project contact Celeste Becia at 208-334-2470.

Idaho Transportation Department Plans for Highway Improvements

An important part of getting ready for the bicentennial entails getting the infrastructure in place to handle the anticipated crowds. The Idaho Transportation Department (ITD) is a key state agency in this regard, and it has been busy planning for the bicentennial for several years.

In addition to nearly \$26 million in improvements that have already been made or will soon be made to State Highway 28 and US Highway 93, ITD has the following projects either underway, or in the advanced planning process:

- The new visitors center at Lolo Pass, that will include a Lewis and Clark interpretive facility.
- Five new passing lanes on Highway 12, along with shoulder widening in places.
- Interpretive signs on Highway 12.
- North Lewiston Gateway beautification.
- Pedestrian and bike pathways in Weippe and Peck.

For more information on these projects contact ITD, 208-799-5090.

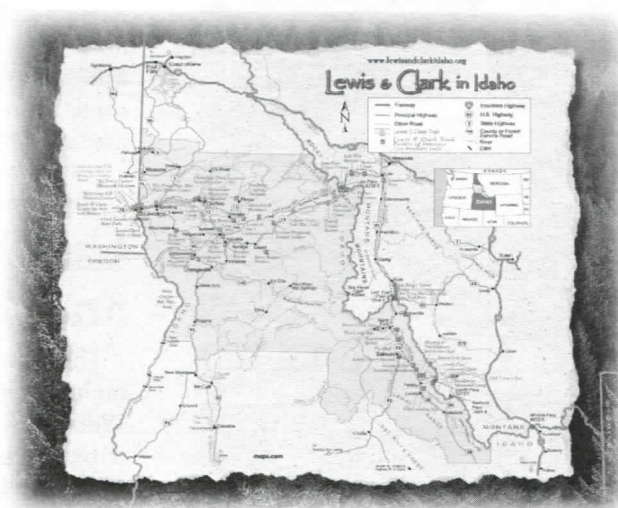


photo:courtesy of Jim Hadley, E.S. Drake

Placemat design you will see throughout Idaho in the next year, at various establishments.

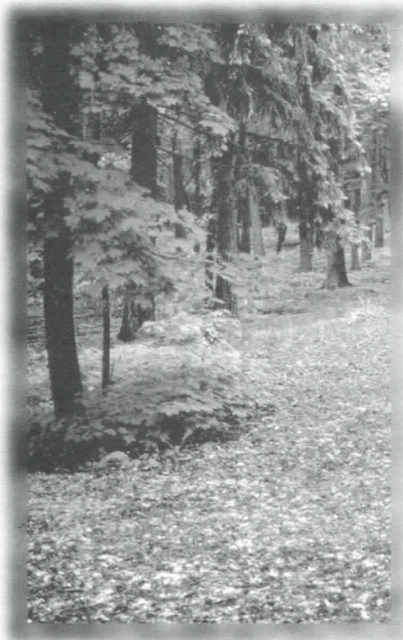
Public Safety Plan

(continued from page 3)

communications system that will, for the first time, link all the Trail counties in Idaho and the intervening counties in Montana, and allow numerous law enforcement entities to communicate with one another. The Governor's Committee this year, in collaboration with its counterpart in Montana, made a request for nearly \$3 million in congressional funding to develop public safety training programs, purchase equipment, and in other ways help Idaho and Montana prepare for the safety needs that come with increased visitation.

Idaho has some of the most pristine parts of the Trail in the nation. But because of the remote nature of much of the Trail, Idaho also has some of the most serious public safety concerns of any Trail state. It is not surprising that Idaho has become the national leader in preparing for public safety needs for the upcoming commemoration. The years of advance planning, the collaboration of many agencies and groups, and the assistance of the Idaho congressional delegation will help ensure that visitors to Idaho will be able to enjoy the pristine nature of the Trail in our state, and that they will be able to journey through safely.

For more about the public safety plan contact Clearwater regional bicentennial planner Victoria Scalise at 208-792-2607.



Weippe Discovery Center Fundraising Moving Well

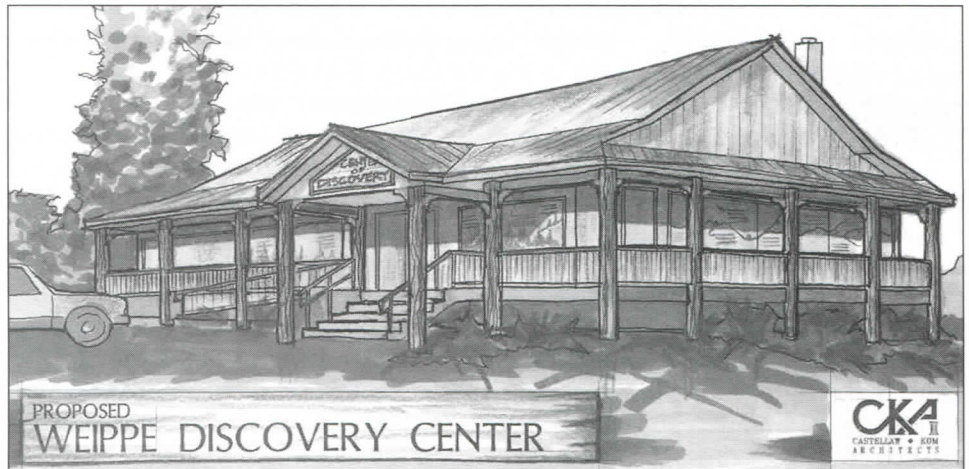


Illustration: Courtesy of Terri Summerfield

Plans are progressing to convert a former church in Weippe into the Weippe Discovery Center. The Center will house a new, larger library for Weippe and the surrounding community, and will serve as an outreach center for Lewis-Clark State College, a small business incubator, a community conference and meeting area, and a Lewis and Clark interpretive facility. Fundraising for the Discovery Center has hit 40 percent of its goal, thanks to the hard work of Terri Summerfield and the Weippe Lewis and Clark Bicentennial Committee.

Located on Highway 11 and the Lewis and Clark National Historic Trail, the Center will provide easy access for visitors to the region. And the Weippe Prairie, where the Nez Perce met the Lewis and Clark Expedition, is sure to be heavily visited during the bicentennial.

The exterior of the structure will become a unique and permanent Lewis and Clark interpretive facility, one that will be "open" 365 days a year, 24 hours a day. A painted rendition of the Lewis and Clark Trail from Travelers Rest in Montana to Canoe Camp in Orofino will progress all around the facility. Along this "trail," beautifully painted murals and descriptive narratives will educate the public about the Corps of Discovery in the area, including the historic meeting with the Nez Perce.

Along with many private donations, the Weippe Discovery Center has been the recipient of \$20,000 in National Park Service Challenge Cost Share funds, \$10,000 in funding from the Forest Service's Rural Community Assistance program, and \$100,000 from the Idaho Department of Commerce.

For more information or to make a pledge, visit the Lewis and Clark link at www.weippe.com, or call Terri Summerfield at 208-435-4614.

Governor's Conference on Recreation and Tourism had LC Theme

The annual Governor's Conference on Recreation and Tourism, held in Lewiston on May 2-4, had a definite Lewis and Clark theme, complete with appearances by William Clark and a Nez Perce elder friend of Captain Clark's, and numerous field trips into Lewis and Clark and Nez Perce country. The conference, coordinated by the Idaho Department of Commerce, attracted hundreds of people from throughout the state. The most heavily attended sessions dealt with recent tourism surveys and the potential impact the bicentennial will have on the state's tourism industry. For more on the 2001 conference and plans for the 2002 conference contact Carl Wilgus at the Department of Commerce at 208-334-2470.

Sacajawea Interpretive Center Project Makes Major Progress

The City of Salmon received \$1 million in Housing and Urban Development funds to assist in the development of a Sacajawea Interpretive Center. The funding was requested by the Governor's Lewis and Clark Trail Committee, and was advocated in Congress by Senator Larry Craig and the other members of the Idaho congressional delegation. The funding came as a direct earmarked appropriation by Congress.

After considering several potential sites, the City of Salmon decided upon a piece of property on U.S. Highway 28 on the outskirts of town, adjacent to a large existing city park. The city has hired Gary Van Huffel as project administrator, and Gary and the city have been kept busy working on permits, environmental reviews, soliciting partners and contributions, and developing a public relations campaign.



photo: courtesy of Gary Van Huffel

Ariel view of property where Sacajawea Interpretive center will be built.

The property, 75 acres, abuts the Lemhi River and will provide public access to this beautiful stretch of the river. It offers immediate access off the highway, spectacular views of the Sacajawea Peaks and nearby mountains, a great opportunity for interpretive walking trails and an outdoor amphitheater, and ample room for expansion in future years.

Plans for the immediate future include finalizing the purchase and preparing the site for initial visitation in 2002, including remodeling the house on the property into a visitors welcoming center, landscaping, creating parking areas, constructing interpretive signage, and developing a small interpretive facility. The project to develop a Sacajawea Interpretive Center on the site has been planned as a multi-phase project, and when funding becomes available and demand warrants, the Center can be expanded.

In the meantime, this lasting legacy to Idaho's famous native daughter will provide unique opportunities for interpretation of the Sacajawea story in a wonderful setting. The development of the Sacajawea Center was one of the top two priorities of the Governor's Committee for the bicentennial, and the Committee offers congratulations to the City of Salmon, the Lemhi County Lewis and Clark Bicentennial Committee, and the Sacajawea Educational and Interpretive Center for their hard work in seeing that a dream is gradually becoming reality in Salmon.

For the latest information on the Center, contact Gary Van Huffel at 208-756-3214.

Idaho Department of Lands Works to Preserve Trail

Bob McKnight, area supervisor of the Clearwater Area for the Idaho Department of Lands (IDL), along with Jim Clapperton, resource supervisor, and other IDL staff have been working closely with the State Historic Preservation Office (SHPO) to help preserve the Lewis and Clark Trail. The Trail passes through about seven miles of IDL property in the vicinity of Weippe, and the IDL is working with Trail researchers to mark the Trail and help lessen the impacts of logging and other activities on the Trail corridor.

IDL and SHPO officials have met with Weippe area residents Gene and Mollie Eastman, who have spent many days on IDL property attempting to locate Trail tread. They have also met with Steve Russell of Iowa State University, the recognized national expert in using GPS technology and scholarly sources to retrace the Trail.

For much of the Trail, all experts agree where the Expedition went on both its westward and eastward journeys. However, there are some areas of "controversy" about just where the Corps of Discovery might have tread, and the IDL is working closely with SHPO to determine and preserve the locations considered to have the strongest evidence of being part of the Trail.

Congratulations to IDL for taking the initiative to preserve this valuable resource. This Trail marking and preservation effort will provide a valuable lasting legacy of the bicentennial.

For more information about the Trail on IDL lands, contact Bob McKnight at 208-476-4587.

Idaho Bicentennial Contacts

There are dozens of people actively involved in planning for the bicentennial in Idaho. They volunteer for local bicentennial committees, work for federal or state agencies, head bicentennial planning for tribes.

Below is a list of some key contacts for Idaho.

A disclaimer: This is in no way meant to be an exhaustive list of all those who are working hard, planning for the bicentennial. I apologize in advance for all those left out. Also, this is not in prioritized order! But contacting one of these people is a good way to get you started if you have questions concerning the bicentennial. These folks can either help you, or refer you to others.

State Coordination:

Idaho Lewis and Clark Bicentennial Coordinator: Keith Petersen, Lewiston, 792-2249, keithp@lcsc.edu

Governor's Lewis and Clark Trail Committee: Contact Keith Petersen (see above), or Anne Schorzman, chair, Boise, 345-8371, SchorzA383@aol.com; Beryl DeBoard, vice chair, Salmon, 756-6789, svibed@salmoninternet.com

Regional Coordination:

Clearwater Regional Bicentennial Planner: Victoria Scalise, Lewiston, 792-2607, vscalise@lewiston.com

Clearwater-Snake Lewis and Clark Bicentennial Committee: Gary Hanes, chair, Winchester, 924-7441, garyhanes@aol.com; Jody Pethtel, administrator, Kamiah, 935-2000, cslsbc@camasnet.com

Lemhi County Lewis and Clark Bicentennial Committee: Cheryl Hart, chair, Helena, MT, 406-495-0319, hartfritz@msn.com

Local Coordination:

Sacajawea Interpretive Center Project, Salmon: Gary Van Huffel, 756-3214, vgary@starband.net

Orofino Bicentennial Committee:

Moe Pare, chair, 476-3726, mpare@clearwater.net

Weippe Bicentennial Committee and Weippe Discovery Center Project:

Terri Summerfield, 435-4614, nwpwg@clearwater.net

Kamiah and Kooskia Bicentennial Committees:

Jody Pethtel, Kamiah, 935-2000, cslsbc@camasnet.com

Lewiston Bicentennial Committee:

Wanda Keefer, chair, 746-8281, wkeefe@presnellgag.com

Tribal Coordination:

Shoshone Bannock Tribe: Hobby Hevewah, liaison with Governor's LC Committee, Fort Hall, 238-8817

Lemhi Shoshone People: Rose Ann Abrahamson, representative to Governor's LC Committee, Fort Hall, 785-1525, rabrahamson@shoban.com

Nez Perce Tribe: Jennifer Oatman-Brisbois, liaison with Governor's LC Committee, Lapwai, 843-2253, jennyb@nezperce.org; Sharen Stevens, tribal bicentennial coordinator, Lapwai, 843-2253, nptbicentennial@hotmail.com

National Park Service Corps of Discovery II Project American Indian Liaison: Otis Halfmoon, Spalding, 843-2261, Otis_Halfmoon@nps.gov

Aides to the Idaho Congressional Delegation Involved in Bicentennial Planning:

Senator Larry Craig: Georgia Dixon, Idaho Falls, 523-5541, georgia_dixon@craig.senate.gov; LeAnn Bifford, Lewiston, 743-0792, LeAnn_Bifford@craig.senate.gov

Senator Mike Crapo: Leslie Huddleston, Idaho Falls, 522-9779, leslie_huddleston@crapo.senate.gov; Mary Hasenoehrl, Lewiston, 743-1492, mary_hasenoehrl@crapo.senate.gov; Peter Fischer, Boise, 334-1776, peter_fischer@crapo.senate.gov

Congressman Mike Simpson: Laurel Hall, Idaho Falls, 523-6701, laurel.hall@mail.house.gov

Congressman Butch Otter: Sherri Sprute, Lewiston, 298-0030, sherri.sprute@mail.house.gov

U.S. Congress Bicentennial Caucus

Congressional Liaison: Craig "Rocky" Rockwell, Lewiston, 743-0792; craig.s.rockwell@usace.army.mil

Federal Agency Coordination:

Bureau of Land Management: Pete Sozzi, Salmon Field Office, 756-5404, peter_sozzi@blm.gov; Michael Ball, Cottonwood Resource Area, 746-0834, michael_ball@blm.gov

Corps of Engineers: Charles Craddock, Clarkston, 509-751-0249, charles.d.craddock@usace.army.mil

Forest Service: Linda Fee, Clearwater National Forest, 926-4274, lfee@fs.fed.us; Stephen Matz, Salmon-Challis National Forest, 756-5116, smatz@fs.fed.us

National Park Service: Doug Eury, Nez Perce National Historical Park, 843-2261, doug_eury@nps.gov; Otis Halfmoon, Corps of Discovery II Project American Indian Liaison, 843-2261, otis_halfmoon@nps.gov

Fish and Wildlife Service: Susan Sawyer, Dworshak Fisheries Complex, 476-4591, susan_sawyer@fws.gov

State Agency Coordination:

Office of the Governor: Allison McClintick, liaison to the Governor's LC Committee, 334-2120, amclintick@gov.state.id.us

Idaho State Historical Society: Steve Guerber, liaison to the Governor's LC Committee, 334-2682, sguerber@ishs.state.id.us; Keith Petersen, state bicentennial coordinator, 792-2249, keithp@lcsc.edu

Idaho Department of Commerce: Carl Wilgus, liaison to the Governor's LC Committee, 334-2470, cwilgus@idoc.state.id.us

Idaho Department of Parks and Recreation: Brian Miller, liaison to the Governor's LC Committee, 334-4199, bmillier@idpr.state.id.us

Idaho Transportation Department: Patti Raino, Boise, 334-8209, praino@itd.state.id.us

Idaho Department of Lands: Robert McKnight, Orofino, 476-4587, rmcknight@clearwater.idl.state.id.us

Idaho Department of Fish and Game: Sam McNeill, Lewiston, 799-5012, sammcneill@idfg.state.id.us

Idaho Commission on the Arts: Dan Harpole, 334-2119, dharpole@ica.state.id.us

Idaho Humanities Council: Rick Ardinger, 345-5346, rickihc@micron.net

College and University Coordination:

Lewis-Clark State College: Libby Rawls, Lewis and Clark Symposium, 792-2282, EARawls@lcsc.edu

University of Idaho: Jim Fazio, Department of Resource Recreation and Tourism, 885-7209, jfazio@uidaho.edu; Jean Teasdale, NASA LC Grant Consortium, 885-7303, jeant@uidaho.edu; Scott Graves, LC Rediscovery Project, 885-4957, sgraves@uidaho.edu

Idaho Chapters of the National LC Trail Heritage Foundation:

Idaho Chapter: Anne Schorzman, chair, Boise, 345-8371, SchorzA383@aol.com

Sacajawea Chapter: Cheryl Hart, chair, Helena, MT, 406-495-0319, hartfritz@msn.com

National Bicentennial Conference to be Held in Lewiston

The seventh annual planning conference of the National Council of the Lewis and Clark Bicentennial will be held in Lewiston, April 12-14, 2002, with a variety of other bicentennial-related meetings taking place in Lewiston prior to and directly after the conference.

A local arrangements committee has been formed to work closely with the National Council. The local arrangements committee is headed by Carl Wilgus of the Idaho Department of Commerce, Carla Higheagle of the Nez Perce Tribal Executive Committee, and Keith Petersen, state bicentennial coordinator.

The National Council plans the primary content of the conference, but it is the responsibility of the local arrangements committee to make everyone feel welcome in Idaho. Expectations are that 400-500 bicentennial planners from throughout the nation will converge on the Seaport City. The Red Lion will be the conference hotel.

The local arrangements committee is currently working to organize two evening receptions on Friday and Saturday nights, as well as another possible smaller reception on Thursday. They are also coordinating plans for gift bags; making suggestions for local and state dignitaries to welcome the conference goers to the Valley; and helping to coordinate a wide variety of "mobile workshops" with the National Council.

One of the goals of the local arrangements committee is to greatly expand the vendors' area at the conference, and to make the vendors an integral part of the conference experience.

Anyone wishing more information about the conference, interested in being a vendor, or interested in volunteering to help welcome the guests to Idaho is encouraged to contact Keith Petersen, state bicentennial coordinator, 208-792-2249.

Improved Scenic Byway Signs Welcome Visitors

Just in time for bicentennial tourism, visitors and residents alike will see new informative signs describing significant sites along US Highways 12 and 13, the officially designated Northwest Passage Scenic Byway.

The artistically redesigned multi-colored signs will replace existing metallic signs near Grangeville, Kooskia, the Clearwater River Casino, and Lolo Pass, with a new sign added at the Lenore Rest Area.

"Outstanding historical, cultural and scenic attributes are important factors in meeting the criteria for a Scenic Byway designation," noted Victoria Scalise, Clearwater Regional Bicentennial Coordinator.

The enhanced signage includes a detailed highway map showing communities, descriptive points of interests, and important historic features such as the Lewis and Clark Trail. "This Scenic Byway project plays an important role in preparing our region for the upcoming Lewis and Clark Bicentennial commemoration," said Scalise.

The project was sponsored and developed by the Clearwater Economic Development Association. Funding partners included the U.S. Federal Highway Administration Scenic Byway Program and the U.S. Forest Service. The Idaho Transportation Department is providing installation and materials. Installation of the first sign (1 mile east of the Casino on Hwy 12) took place in May.



From left to right: Dodd Snodgrass, Mary Jahn, Brian McCormack, and Victoria Scalise participate in the dedication of the first of several new signs along Idaho's Northwest Passage Scenic Byway.

Bicentennial License Plate Marketing Underway

Display counter cards featuring the image of the new Lewis and Clark bicentennial license plate are adorning county assessors' offices, museums, visitors centers, and libraries throughout the state. At each location, interested people can also pick up a brochure on how to order the plates. The counter cards and brochures were designed by E.S. Drake Communication of Boise, and are being distributed for the Governor's Lewis and Clark Trail Committee by Julie Monroe of Moscow.

Vehicular plates are for sale for Idaho passenger vehicles, recreational vehicles, and light trucks. Of the \$35 charge for the plates, \$25 goes to the Governor's Committee. Plates can also be personalized for \$25, \$15 of which goes to the Governor's Committee.

For those looking for a special gift for an in-state or out-of-state resident, souvenir sample plates are available for only \$30, \$20 of which goes to the Governor's Committee. The souvenir plates are the same size, material, design, and quality as vehicular plates, and they can be personalized for free. They make great office decorations!

Proceeds from the sales of the plates will assist the Governor's Committee in funding community bicentennial projects and in helping to prepare for the bicentennial.

For more on the license plates and application forms visit www2.state.id.us/dmv/forms.htm, or call the Idaho Transportation Department, 208-334-8649. The vehicular plates can be purchased anywhere in the state where you normally buy license plates. The souvenir plates must be ordered directly through the Idaho Transportation Department.

Idaho State Historical Society Assists Bicentennial Projects

The Idaho State Historical Society has been designated as the lead state agency for the bicentennial, and, in collaboration with the Governor's Lewis and Clark Trail Committee, spearheads bicentennial planning activity from its Lewis and Clark Information Center in Lewiston. The Information Center is in the Lewis-Clark Center for the Arts and History, in space donated by Lewis-Clark State College.

A main purpose of the Information Center is to share information with the many Idahoans who are involved in bicentennial planning. In addition, bicentennial coordinator Keith Petersen actively participates in the Northwest Coalition of bicentennial states (Montana, Idaho, Washington, Oregon) and the Circle of State Advisors to the National Council of the Lewis and Clark Bicentennial, with the goal of enabling tourists to travel from one state to another as seamlessly as possible.

Besides providing assistance on a wide variety of projects and programs, the Information Center in 2001 has so far assisted with funding of several projects, including

- state placemats.
- state Lewis and Clark website.
- Governor's Committee Library Initiative.
- Governor's Committee Museum Initiative.
- Governor's Committee production of brochures to market the bicentennial license plates.
- Nez Perce Tribe St. Louis Warriors project to mark the gravesite of two Nez Perce warriors who died in St. Louis in the 1830s on an information-gathering trip to see William Clark.
- Clearwater-Snake Lewis and Clark Bicentennial Committee posters and brochures for the 2001 Festival of Discovery.
- Lemhi County Lewis and Clark Bicentennial Committee for expenses incurred in developing the Sacajawea Educational and Interpretive Center project.

Anyone in Idaho involved in any level of bicentennial planning is encouraged to keep state coordinator Keith Petersen informed. The more we are all linked together, the more we can accomplish with the least amount of repeated effort. You may call him at 208-792-2249.

Senator Crapo Makes Offer of Sacajawea Coins

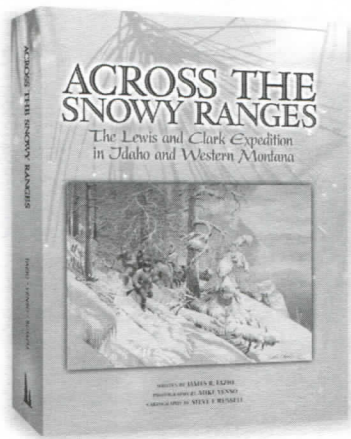
Senator Mike Crapo, along with other members of Congress, received \$100 worth of Sacajawea dollars from the U.S. Mint. Senator Crapo would like to make these coins available for bicentennial groups in Idaho who might want to use them in fundraising, similar to the project undertaken by the Lemhi County LC Bicentennial Committee with coins donated by Congressman Mike Simpson last year.

Senator Crapo's staff has contacted Intermountain Industries in Salmon. Intermountain Industries will make wooden plaques in the shape of Idaho with one of the coins mounted on the plaque and a note from Senator Crapo at the bottom of the plaque. Groups can use these plaques however they feel will make them the most money—auction, selling, etc. To find out more about the program contact Intermountain Industries, 208-756-8600.



New Book and Website Available

Jim Fazio, resource recreation and tourism professor at the University of Idaho and a member of the Governor's Lewis and Clark Trail Committee; Mike Venso, former photographer for the *Lewiston Morning Tribune*; and Steve Russell of Iowa State University have teamed to produce a beautiful large format book with more than 90 color photographs entitled *Across the Snowy Ranges: The Lewis and Clark Expedition in Idaho and Western Montana*. The book gives a daily account of the Expedition in the most difficult country of the entire journey.



The book emerged from Fazio's research of Lewis and Clark's journals and his retracing of their route in Idaho. "Spending time on the Trail, getting a feel for the weather and the ruggedness of the territory gave me a fuller appreciation of what the Expedition encountered and what made their Idaho experience different from the rest of their route," Fazio said. Insights into local history, rental lookouts near the Trail, and other items of interest add details to the historical account. Each chapter includes historical maps provided by Trail researcher Russell and color photographs by Venso.

Across the Snowy Ranges was published by Woodland Press and sells for \$29.95. See www.woodlandgifts.com or call 208-882-4767 for information on how to order.

Another Idahoan, Julie Fanselow, author of *Traveling the Lewis and Clark Trail*, notes good sales on the latest (2000) edition of her guide, and states that Falcon Press plans to come out with at least one more edition prior to the bicentennial.

At the present time she is developing a website, www.lewis-and-clark.com, which she hopes "will be a major source of bicentennial news and even live reporting from bicentennial events as the time gets closer."

Julie is eager to be kept up to date on all matters relating to Lewis and Clark. "I am particularly eager to hear from any and all Idaho communities, businesses, individuals who want to spread the word on events, attractions, trips, and so forth," she says. To contact her, use email at fanselow@qwest.net, or regular mail at 1511 9th Ave. E, Twin Falls, ID 83301-6611.

Festival of Discovery Underway

The Clearwater-Snake Lewis and Clark Bicentennial Committee launched the Festival of Discovery in the summer of 2001. Revolving around the popular "Dugouts on the Clearwater" trek down the river from Canoe Camp to Lewiston, CSLCBC hopes the Festival of Discovery will grow to include every community on and adjacent to the Clearwater River and become one of the state's premier events by the time of the bicentennial.

This year CSLCBC printed a Festival of Discovery guide and poster highlighting existing events in north central Idaho and eastern Washington. The numerous listings include events that were scheduled between July 1 and September 3. The impressive list of existing family events provides a solid foundation on which to build a substantial and sustained festival that can attract tourists to the region during the bicentennial.

The Festival of Discovery guides were produced on flyers and rack cards and distributed throughout the region. A web site has been updated to include these event lists. Visit it at www.lewisclarkidaho.org.

Organizations that sponsor events interested in applying for inclusion in future guides should contact Festival of Discovery, CSLCBC, P.O. Box 871, Lewiston, ID 83501.

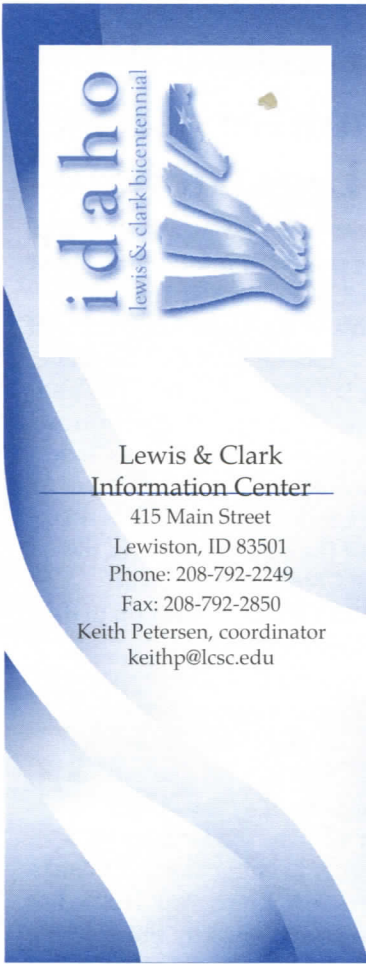
Governor's Committee Meets with Legislators

The Governor's Lewis and Clark Trail Committee provided information about bicentennial planning and "period" refreshments to the Idaho Legislature at the State Capitol on February 27. Idaho crafts people exhibited their Lewis and Clark wares, the Idaho State Historical Society displayed its Lewis and Clark traveling trunk, and books by Idaho Lewis and Clark authors were shown. Throughout the day, members of the Governor's Committee met with legislators and brought them up to date on bicentennial activities.

The Governor's Committee met with the Joint Finance Appropriations Committee during its tour of north central Idaho on July 10. The Bureau of Land Management's Pink House Recreation site was the location for a warm summer evening along the banks of the Clearwater River. Pink House has recently been renovated by the BLM into a beautiful full-service camping facility, just in time for the bicentennial. JFAC members ate buffalo tacos, witnessed fire making the way Lewis and Clark did it, and enjoyed a dugout canoe. The Governor's Committee presented each JFAC member with a one-of-a-kind Lewis and Clark ornament commemorating the evening as a way of saying thanks for the Committee's support of bicentennial planning efforts.



Kevin Talbot of the Sacajawea Monument Committee prepares to meet with legislators during the bicentennial legislative reception at the capitol in February.



Lewis & Clark
Information Center
 415 Main Street
 Lewiston, ID 83501
 Phone: 208-792-2249
 Fax: 208-792-2850
 Keith Petersen, coordinator
 keithp@lcsc.edu

Some Upcoming Bicentennial Events

Circle of State Advisors and Circle of Tribal Advisors to the National Council of the Lewis and Clark Bicentennial, and National Council board meeting, St. Louis, October 25-28. Contact National Council, 888-999-1803.

Governor's Lewis and Clark Trail Committee meeting, Boise, January 2002 (specific date not yet set). Contact: Keith Petersen, 208-792-2249.

Intergovernmental Advisory Bicentennial Committee meeting, Boise, January 2002 (specific date not yet set). Contact: Keith Petersen, 208-792-2249.

Annual Meeting of the National Council of the Lewis and Clark Bicentennial, April 12-14, 2002, Lewiston. Contact: National Council, 888-999-1803, or for local arrangements Keith Petersen, 208-792-2249.

*****AUTO**3-DIGIT 991
 7
 Steve Lee
 PO BOX 102
 COLTON WA 99113-0102

NON-PROFIT
 ORGANIZATION
 U.S. POSTAGE
 PAID
 UNIVERSITY OF IDAHO

Idaho State Historical Society
 1109 Main Street
 Suite 250
 Boise, ID 83702