

## IDAHO LEWIS AND CLARK BICENTENNIAL NEWS

Published by the Lewis and Clark Information Center, an office of the Idaho State Historical Society, for the Governor's Lewis and Clark Trail Committee.

Editor: Keith Petersen

Assistant Editor: Julie R. Monroe

Designer: Melissa Rockwood,  
Rdesign

Printing: UI Printing and Design  
Services

To be added to the mailing list or for information about the bicentennial, contact Keith Petersen at: the Center, 415 Main, Lewiston ID 83501, 208-792-2249, or keithp@lsc.edu.

Office space for the Lewis and Clark Information Center is generously provided by Lewis-Clark State College.

## GOVERNOR'S LEWIS AND CLARK TRAIL COMMITTEE

Beryl DeBoard, *Chair*

Joe Marshall, *Vice Chair*

Rose Ann Abrahamson

Ruthann Caylor

James Fazio

Steve Guerber

Jerry Jeager

Charles Knowles

Marge Kuchynka

Carol MacGregor

Kathy Martin

Julian Matthews

Brian Miller

Jennifer Oatman-Brisbois

Allen Pinkham

Audrey Ponzo

Anne Schorzman

Carl Wilgus

Sara Nye, *liaison to the  
Governor's office*

Keith Petersen, *State  
Bicentennial Coordinator*

## BICENTENNIAL ENABLES NEZ PERCE TRIBE TO TELL ITS STORY

The primary purpose of the Nez Perce Tribe Lewis and Clark Bicentennial Committee, according to Committee member Ann McCormack, "is to tell the tribe's side of the story about the coming of the Corps of Discovery to Nez Perce country and all that was to follow." One of the major characters in that story is Twisted Hair. He acted as the official leader of his band to receive the Corps in 1805. Members of the Lawyer family are direct descendants of Twisted Hair.

"All too often," notes McCormack, who is the Cultural Arts Coordinator for the Nez Perce Arts Council, "family members who hold very significant pieces of tribal history have not recorded those accounts, and they become lost forever." Working with discretionary funding provided by the Idaho Governor's Lewis and Clark Trail Committee, McCormack is now heading up a project to record some of these important stories. "This project is an attempt to provide the survivors of Twisted Hair the opportunity to record their recollections as told to them by their ancestors."

The Twisted Hair project includes a series of videotaped interviews and professional photographs with the oldest descendants and friends of the family of Chief Twisted Hair. These include Mylie Lawyer, Archie Lawyer, Christine Wilson-Lawyer, and Gene Wilson. Nez Perce tribal member Daniel Kane is the videographer, Mark Lamoreaux of Moscow the photographer, and tribal members McCormack and Angel Sobotta the interviewers.

Once completed, the video footage will be edited by the Lawyer family, and then the interviews and photographs will be archived by the tribe and the Idaho State Historical Society.

"One of the most important stories we have to tell during the commemoration is the tribal perspective of the bicentennial," said Steve Guerber, Executive Director of the Idaho State Historical Society and a member of the Governor's Committee. "This is an incredibly valuable project. The Governor's Committee is proud to be able

to support it, and the State Historical Society looks forward to working with the tribe in permanently preserving these materials."

The Governor's Committee is also assisting the tribe with its traveling parflesche project. In 1997, the Nez Perce Arts Council developed a Bicentennial Arts Initiative. Each year, the Council has been working on projects from the prioritized list as resources become available. One of those projects is the parflesche program.



*Mylie Lawyer, descendant of Twisted Hair, viewing corn husk bag made by Arthur Taylor, Nez Perce, for the Parflesche Project. [Photo courtesy of Angel Sobotta]*

"One way to explain how the tribe lived at the point of contact is through the Nez Perce Parflesche Project," McCormack explained. A parflesche is an "Indian suitcase," or trunk. The parflesche is like a large envelope and made of rawhide. It is folded in thirds width-wise and then folded in thirds lengthwise. It is tied together with buckskin laces and can be easily secured to a horse, or just about anything.

The Indian suitcases will hold items that men and women would have used for work or leisure around the period Lewis and Clark arrived. The parflesches and all the contents are being made by Nez Perce tribal members. A teacher's guide has been developed, and a video library will be included.

*Continued*

## NEZ PERCE, *continued*

Four sets of the trunks will be available for schools, libraries, and organizations. Two sets will circulate out of the Lewis-Clark State College Center for Arts and History, and two from the Idaho State Historical Society, through its already-existing traveling trunk program. The State Historical Society has created Lewis and Clark traveling trunks that have been going to schools for a couple of years and are extremely popular. Teachers combining those trunks—featuring replicas of items that the Corps brought with them—with the parflesches will hold the key to a unique educational experience. The parflesches will be available in early 2004.

In addition to the Governor's Committee, the parflesche project is also funded by the tribe and the National Park Service.

The tribe also looks forward to providing authentic Nez Perce made materials to

people who visit Idaho during the bicentennial. The Nez Perce Authenticity Label Program provides identification labels for items handmade by enrolled members of the Nez Perce Tribe, ensuring purchasers of authenticity.

The labels feature a Nez Perce woman and man with a geometric and floral graphic on either side, with the words "Nez Perce Tribe." In addition to the labels, the tribe has also published a brochure explaining the program and developed stickers. The artwork for the label was determined through an artists' contest, with tribal member Brooklyn Baptiste winning the contest.

The program is similar to the "Made in USA" effort. Labels will be used for items in the retail sales range of \$50 and more, and stickers for items priced below \$50. The program will be self-sustaining. Initial start-up costs were provided by the tribe and the Governor's Committee. \*

## GOVERNOR'S COMMITTEE AWARDS \$650,000 IN BICENTENNIAL GRANTS

On August 16, the Idaho Governor's Lewis and Clark Trail Committee met in Salmon and voted to award \$650,000 in Bicentennial Community Assistance Grants for 2003. This is the third year of the program, and to date the Governor's Committee has awarded more than \$1.5 million in grants to assist communities and organizations in Idaho as they prepare for the Lewis and Clark Bicentennial. The major sources of funds for the Governor's Committee grants program come from direct congressional appropriations sought by the Idaho congressional delegation, state funds awarded through the Idaho state legislature, and proceeds from sales of the

*Continued*

## SACAJAWEA CENTER GRAND OPENING

After years of anticipation and preparation, Salmon's Sacajawea Interpretive, Cultural and Education Center celebrated its grand opening during Sacajawea Heritage Days on August 15, 2003. Several hundred people braved the heat and nearby wildfires to attend the festivities.

The Center features an interpretive center, amphitheater, interpretive pathways, research library, and a spectacular location on 71 acres on the outskirts of Salmon.

Many partners helped to bring about this lasting legacy of the bicentennial, including the City of Salmon, representatives of the Lemhi Shoshone, the Lemhi County Lewis and Clark Bicentennial Committee, the Bureau of Land Management, U.S. Forest Service, the Salmon Arts Council, and the Salmon Valley Chamber of Commerce.

The Idaho Governor's Lewis and Clark Trail Committee named the development of a Sacajawea Interpretive Center in Salmon as one of its top two bicentennial projects of national significance during planning for the bicentennial. The other project listed by the Committee was the expansion of Canoe Camp in Orofino, a project that is also nearing successful completion.

Working with the Lemhi County

Lewis and Clark Bicentennial Committee and the City of Salmon, the Governor's Committee wrote the appropriation language and worked with the Idaho congressional delegation, resulting in a direct

congressional appropriation of \$1 million to the City of Salmon allowing for the purchase of the 71-acre site and initial development. Since that appropriation, the Governor's Committee has provided more than \$115,000 in funding for the Sacajawea Center.

Included in that funding was a grant to assist in having a bronze monumental statue of Sacajawea and Pomp that is now sited in a natural outdoor setting at the Center. The sculpture, a duplicate of one erected in 2003 at the entrance to the Idaho State Historical Museum in Boise, was done by Idaho artist Agnes Vincen Talbot and was unveiled at the Sacajawea Center on July 5, 2003.

The Center is open daily from June through August, and Tuesdays through Saturdays in May, September and October. Contact the Center at 208-756-1188, or visit [www.sacajaweacenter.org](http://www.sacajaweacenter.org) for more information. \*

*Charlie Knowles of the Governor's Committee emerges from a wickiup on site at the Sacajawea Center.*



GRANTS, *continued*

Idaho bicentennial license plate, which features an image of Sacajawea. In 2003, the U.S. Forest Service partnered with the Governor's Committee through its Rural Community Assistance Program. In 2003 the Forest Service contributed more than \$30,000 for Idaho bicentennial projects.

## Projects funded in 2003:

**Idaho Chapter, LC Trail Heritage Foundation**, \$5,860 for a Lewis and Clark teachers' workshop.

**Upper Clearwater LC Bicentennial Committee**, \$20,000 to plan for the National Park Service's "Corps of Discovery II" traveling interpretive center visit to Kamiah; and \$18,000 for a regional travel and information center in Kooskia.

**Boise State University Radio**, \$9,950 for a radio documentary, "Lewis and Clark: The Trail in the 21<sup>st</sup> Century."

**North Central Idaho Travel Association**, \$15,965 to provide funding for a national touring company to give LC performances at grade schools throughout the state; \$18,000 to promote the "Festivals of Discovery;" and \$16,000 for a LC bicentennial marketing position.

**Idaho Humanities Council**, \$42,750 for a LC speakers' bureau and a 2004 summer institute for Idaho teachers on "The Jefferson Presidency."

**Clearwater-Snake LC Bicentennial Committee**, \$20,000 for a LC speakers' bureau; and \$24,400 for an administrator.

**Lewiston LC Bicentennial Committee**, \$42,000 for bronzing of the Tsemenicum sculpture at the LC Center in Lewiston.

**Lewis-Clark State College Center for Arts and History**, \$20,500 for a traveling exhibit and LC speakers and presenters during the bicentennial at the Center in Lewiston.

**Lemhi County LC Bicentennial Committee**, \$28,500 for a reenactment of LC in Lemhi County.

**Lewis-Clark State College**, \$25,000 for the fifth annual LC Symposium, to be held in Lewiston in June 2004.

**Weippe Community Club**, \$9,500 for programming, advertising, and promoting the Weippe Camas Festival in 2004.

**Idaho Environmental Education Association**, \$11,000 for LC related sessions at the

## NPS ADDITIONS AT CANOE CAMP AND WEIPPE PRAIRIE

Recent National Park Service acquisitions at Orofino and Weippe will preserve sites illustrating the Lewis and Clark Expedition in Idaho.

Since 1965, NPS has maintained Canoe Camp as a component of Nez Perce National Historical Park. Here the Corps of Discovery encamped on the Clearwater River, and with the assistance of Nez Perce craftsmen, built canoes to continue their journey to the

Pacific. The 2.65-acre site is located on U.S. Highway 12 at Orofino, and contains pedestrian trails, interpretive signs, a chemical toilet, and a small parking area.

Public safety and enjoyment have long been of concern to park managers. In 2002, on the cusp of the Expedition bicentennial, NPS had a rare opportunity to address these issues by acquiring private land for sale adjacent to Canoe Camp.

After consulting with citizens and elected officials, last December NPS bought the 3.3-acre Riverview Estates mobile home park. The tract was subdivided, with a 1.5-



*Members of the Nez Perce Tribe L&C Bicentennial Committee and Weippe Mayor Norm Steadman visited the NPS's new acquisition at Weippe on October 18. [Photo courtesy of Scott Eckberg]*

acre parcel retained for improvements. The remnant, containing the intact manufactured home community, is being conveyed by NPS to a private party interested in the continuation of the manufactured home park.

"Our plan for this addition is to provide permanent restroom facilities, expanded bus

*Continued*

Idaho Environmental Education Summits in 2004 and 2005.

**Lewiston Chamber of Commerce**, \$20,000 for the third annual "Lewis and Clark Discovery Faire."

**Nez Perce Arts Council**, \$1,920 to instruct young girls in traditional dances.

**Idaho State Library/Log Cabin Literary Center**, \$50,000 for a LC "Let's Talk About It" program in Idaho libraries, and funding to bring LC scholars to Idaho to speak before various audiences.

**Idaho Academic Decathlon**, \$10,000 to host a LC "Cultural Day" at the national Academic Decathlon, to be held in Boise in 2004.

**City of Salmon**, \$20,000 to plan for the visit of National Park Services' Corps of Discovery II traveling interpretive center to Salmon; \$5,000 for Sacajawea Heritage Days in 2004; \$15,000 for Sacajawea Interpretive Center amphitheater enhance-

ments; \$17,550 for a scale model topographic map of the homeland of Sacajawea and the route of LC in Lemhi County for the Sacajawea Interpretive Center; and \$5,622 for Sacajawea Interpretive Center entrance signs.

**Idaho Botanical Garden**, \$25,000 for a LC native plant garden in Boise.

**Idaho State Historical Museum**, \$39,720 for a LC interpretive programming center at the Museum in Boise.

**Idaho Public Television**, \$30,000 for a documentary, "Lewis and Clark, Crossing the Centuries."

**Nez Perce Tribe**, \$40,000 to plan for the Tribe's national LC bicentennial signature event in 2006; \$20,000 for bicentennial exhibits and presentation equipment; and \$20,000 to support Ni Mii Pu storytellers at LC programs.

**City of Lapwai**, \$4,987 for welcome signs.\*

## NPS ADDITIONS, *continued*

and RV parking, and safer vehicle access," said Doug Eury, superintendent of Nez Perce National Historical Park. "Before development can begin, certain legal requirements must be met."

Last summer, an archeological investigation was conducted in partnership with the Nez Perce Tribe, whose ancestors encamped here long before the Expedition's brief stay. About 100 auger holes and four one-by-one meter test units were excavated. The investigation is under review by the Idaho State Historic Preservation Office, whose concurrence is required before improvements can proceed, Eury said.

Meanwhile, two other acquisitions occurred at Weippe Prairie, a traditional Nez Perce village area and the vicinity of that tribe's 1805 encounter with the Corps of Discovery.

Last December, NPS purchased the 80-acre Opresik farm three miles from Weippe. Under terms of a life estate, Rose Opresik continues to reside on the property, which she and her late husband John bought in 1944. A vehicle pullout, interpretive sign, and visitor register mark its location on Larson Road.

Nestled amid neighboring farms, the land includes fields of camas, a traditional food source that influenced the area's ancestral connection and occupation by the Nez Perce. Park priorities are to sustain this native plant as an ethnobotanic resource, and control noxious weeds.

In August a final acquisition of 195 acres adjoining the Opresik parcel occurred. The combined 275-acre tract will be managed as a single contiguous site. The park is working with city officials and citizens to improve directional signing, and to incorporate Weippe Prairie into a proposed Gold Rush Loop Tour for motorists.

The opportune purchases at Orofino and Weippe involved willing sellers, and were made possible through the assistance of U.S. Senator Larry Craig, and paid by congressional appropriation from the Land and Water Conservation Fund. The expansion of Canoe Camp was listed as one of the Idaho Governor's Lewis and Clark Trail Committee's top two projects of lasting significance when it began planning for the bicentennial, and the Governor's Committee worked with Senator Craig and the Idaho delegation on the congressional appropriation.

"While the Lewis and Clark Expedition bicentennial will come and go, these permanent additions to Nez Perce National Historical Park represent a lasting legacy for the American people," Eury said. "Our stewardship of these sites will benefit future generations, enabling their understanding of the rich cultural heritage both of the Nez Perce people, and of those who came after."

To learn more, contact the Park's Idaho unit manager, Scott Eckberg, at 208-843-2261x151, or [scott\\_eckberg@nps.gov](mailto:scott_eckberg@nps.gov). \*

## HOSPITALITY TRAINING ALONG THE TRAIL

For people to have a successful experience with bicentennial activities in Idaho, our business and tourism support organizations need to be ready. The "Training Along the Trail" project represents a unique collaborative effort among educators, business people, agency representatives, economic development and tourism-related groups. These groups have come together to create and implement a strategy to address major shortcomings in current training resources. The program will provide customer service and bicentennial host training within the hospitality industry in Idaho's Region II. The program is supported by a grant from the Idaho Governor's Lewis and Clark Trail Committee.

"The 'Training Along The Trail' project was designed to meet the needs described in the Governor's Committee long-range plan to provide hospitality training to targeted workers," explained project director Tom Mayburry, who is associate professor of Hotel/Restaurant Management at Lewis-Clark State College (LCSC). "These needs include reaching as many front-line employees as possible by providing 1,200 hours of training to 400 people at 3-hour workshops. The outcome goal is to provide front-line employees with skills and information to

*Continued*

## CORPS II TO VISIT FOUR SITES IN IDAHO

Corps of Discovery II is a traveling interpretive center that is now on the road commemorating the bicentennial, having made its debut at the national bicentennial kickoff in Charlottesville in January 2003. Corps II is the product of many federal agencies and is scheduled by the National Park Service. It consists of three tents: a welcome tent, an exhibit tent, and the Tent of Many Voices, which includes seating for more than 200 people who can watch performances, listen to lectures, or view videos.

The Corps II schedule for 2005 and 2006 has been tentatively set by the National Park Service. Corps II will stop in four places in Idaho, as well as in nearby Clarkston, Washington. Idaho will cooperate with Washington while Corps II is in Clarkston. Three of the site visits will be during the school year, which will provide opportunities for school field trips.

The Corps II schedule for Idaho is as follows:

Salmon – August 13-21, 2005

Kamiah – September 16-26, 2005

Clarkston, Wa. – October 1-10, 2005

Boise – May 20-29, 2006

Clearwater River Casino – June 3-17, 2006

The Idaho Governor's Lewis and Clark Trail Committee has provided grants to the communities of Salmon and Kamiah to help them plan for Corps II, and it has also provided a grant to the Nez Perce Tribe to help it plan for its national signature event in June 2006, at which Corps II will appear. In addition, the Governor's Committee has hired Madeline Buckendorf of Caldwell to develop a plan for the Boise visit of Corps II. Planning is well underway in all of these communities.

Contact Keith Petersen, 208-792-2249, if you would like more information about Corps II, its stops in Idaho, or contact information for people in local communities who are planning for Corps II visits. \*

## HOSPITALITY, *continued*

sell all of the attributes of the region and thus encourage Lewis-Clark bicentennial visitors to stay another day and to return again."

The project includes the following activities:

- Coordination of a project steering committee to oversee materials development, training delivery, implementation of a sustainability plan, and project evaluation.
- Coordination with Clearwater-Snake Lewis and Clark Bicentennial Committee (CSLCBC) and North Central Idaho Travel Association (NCITA) to develop and implement a marketing plan that provides additional exposure for participating businesses and agencies.
- Identification and collection of existing materials from the region for use in materials development and training delivery.
- Development of additional materials as necessary, production of training and support materials, and quality control checks for accuracy and ease of use, including review of materials by a local historian and the option for review by a tribal representative.
- Training for trainers, for front-line employees, and for employers
- In cooperation with the hospitality program at LCSC, identify students to act as mystery shoppers/observers to provide feedback to businesses, communities, and the project.
- Evaluation and revisions of materials and delivery system as needed
- Work with NCITA, LCSC, other agencies, and local businesses to develop a sustainable ongoing program.
- Develop incentives (badges, cheat sheets, and banners) and coordinate activities with CSLCBC and NCITA to increase participation by implementing a marketing and promotion plan around the Lewis and Clark Host theme.
- Ensure all materials are accurate, easy to use and understand, and widely accessible.

As of December 2003, 88 employers and employees have taken advantage of the three-hour workshops. For more information on the "Training Along The Trail" project, contact Thomas Mayburry at [tmayburr@lsc.edu](mailto:tmayburr@lsc.edu) or visit [www.lsc.edu/hospitality](http://www.lsc.edu/hospitality). \*

## MEDALLION SERIES IS COMPLETED

Medallion Consultants, Inc. of Osburn, Idaho, has completed a set of five "Lewis and Clark in Idaho" silver medallions. Each medallion contains one ounce of silver. The medallions are minted by Idaho's Sunshine Mining, Inc., and are endorsed by the Idaho Governor's Lewis and Clark Trail Committee. A portion of proceeds from sales goes to the Governor's Committee to assist with funding bicentennial projects in communities throughout the state.

Idaho is the only state with such a set of bicentennial medallions, and they make for a lasting keepsake of the commemoration. Each medallion has a map of the Lewis and Clark Trail in Idaho on one side. The opposite side of each features a different Idaho event.



Coin #1 features Lewis and Clark, the co-commanders of the expedition.

Coin #2 commemorates the flag unfurling at the meeting of two cultures. After crossing Lemhi Pass on the Continental Divide, Lewis's small party was welcomed by a band of Shoshone warriors, led by Sacajawea's brother Cameahwait. In recognition of the meeting, Lewis unfurled the American flag for the first time in what is now Idaho.

Coin #3, "Crossing the Snowy Bitterroots," commemorates the nine days the Corps of Discovery suffered from "cold, hunger and fatigue" while crossing 75 miles of snowy, steep, slippery mountain ridges, the most difficult part of the 8,000 mile journey.



Coin #4 was designed by Nez Perce artist Brooklyn Baptiste, the winner of a design contest sponsored by the Governor's Committee and the Tribe for tribal members. "Befriended by the Nez Perce at Weippe Prairie" pays tribute to the Nez Perce people who fed the expedition, gave directions, and showed them the Indian way of making dugouts. It features images of Nez Perce Chief Twisted Hair and William Clark.

Coin #5 features Canoe Camp on the Clearwater River, where in September 1805 the Corps found ponderosa pine trees which they chopped and burned to build five dugout canoes to continue their journey down the Clearwater, Snake, and Columbia rivers.

The medallions are available in both all silver, or with gold relief—24 karat gold plating over the pure silver. They are enclosed in two-piece clear plastic coin holders. The final mintage will reflect demand, but will not exceed 5,000 sets. A vinyl display wallet for all five medallions is also available.

The silver medallions are available for \$24 each; or \$32 for medallions with gold relief. There are discounts for those ordering all five medallions.

For further information, contact: Medallion Consultants, Inc., P.O. Box 806, Osburn, ID 83849, Toll free: 888-437-4552, Web: [www.idahosilverjewelry.com](http://www.idahosilverjewelry.com).

Or, for a brochure, contact Keith Petersen, Lewis and Clark Information Center, 415 Main Street, Lewiston, ID 83501, 208-792-2249, [keithp@lsc.edu](mailto:keithp@lsc.edu). \*

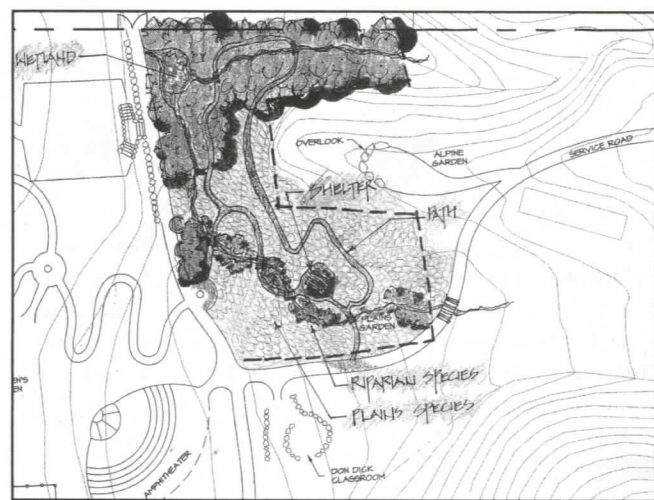
## LEWIS AND CLARK NATIVE PLANT GARDEN TO COME TO BOISE

The Idaho Governor's Lewis and Clark Trail Committee awarded a \$25,000 grant to the Idaho Botanical Garden, located in Boise, to develop a Lewis and Clark Native Plant Garden in the upper north end of its grounds. This garden will serve as an interpretive site for plant species described by Lewis while he traveled between Great Falls, Montana, and The Dalles, Oregon. Additional funding of \$4,500 in cash contributions has been collected for this project with \$15,389 in in-kind donations being pledged. The Idaho Botanical Garden welcomes others wishing to participate in this project that brings a physical aspect of the Corps of Discovery's journey to the southern portion of Idaho.

The project has two phases. The first phase will consist of planting half of the 120 plant species to be eventually included, made accessible by pathways and accompanied by signage labeled with common and scientific names, and the location and date they were found by the Expedition. There will be a central meeting area and the first of several water features. The next phase will expand the number of plant species, paved paths, and water features and will include a structure modeled after temporary shelters built by the expedition members. The shelter will provide shade, a place to rest, and interpretive signage telling the Lewis and Clark story. Visitors will explore the garden aided by an interpretive brochure.

The project timeline calls for groundbreaking to take place in early spring, 2004.

The Lewis and Clark plantings will become a vital component of the Garden's adult and youth education programs. In 2003 the Garden hosted 5 speakers during its Lewis and Clark lecture series. In 2004, the series will be scheduled for the third Tuesday of each month beginning on May 18 and continuing through September 21.



Plan for the Idaho Botanical Garden's Lewis and Clark Native Plant Garden to be located in the upper north end of its grounds. [Image courtesy of Idaho Botanical Garden]

- May 18: Mike Venso presents a slide program of the Lewis and Clark Trail as it looks today.
- June 15: Joyce Badgley Hunsaker dresses and speaks as Sacajawea about her life and contributions to the Expedition.
- July 20: Mike Crosby describes how the members of the Corps of Discovery were selected and discusses their contributions to the Expedition and their lives after they returned.
- Aug. 17: Richie Doyle dresses and speaks as General William Clark about the Expedition and his life following it.
- Sept. 21: H. Wayne Philips gives an illustrated talk of the plants catalogued by the Expedition. \*

## LOLO PASS VISITORS CENTER AND REST AREA DEDICATED

One of the most anticipated lasting legacies of the bicentennial was commemorated on June 27, 2003 when several hundred spectators witnessed the dedication of the new visitors center and rest area at Lolo Pass. The Center was a partnership of the Montana and Idaho transportation departments, the U.S. Forest Service, tribes from Idaho and Montana, and several other groups.

Idaho Governor Dirk Kempthorne and Nez Perce Tribal Chairman Anthony Johnson were among the speakers taking part in the ceremony. Speakers celebrated the culture and history of tribes that have traveled over the Pass for thousands of years, as they also noted the passing through the area of Lewis and Clark 200 years ago. The new visitors center includes an interpretive center focusing on the natural and human history of the Pass, including Lewis and Clark.

Many people worked many years to make the visitors center a reality, but special thanks go to Elayne Murphy and Diana Jones of the Clearwater National Forest for all of their hard work \*



The Lewis and Clark Fife and Drum Corps of St. Charles, Missouri, performs at the dedication of the Lolo Pass Visitors Center and Rest Area on June 27, 2003.



*Stephanie Ambrose-Tubbs addresses the crowd gathered for the dedication of the memorial to her father at Lolo Pass on June 27, 2003.*

## STEPHEN AMBROSE MEMORIAL DEDICATED

Included in the new Lolo Pass Rest Area (see story below left) is a quarter mile nature trail. At the beginning of the trail rests a memorial to Stephen Ambrose, author of *Undaunted Courage: Meriwether Lewis, Thomas Jefferson, and the Opening of the American West*.

The memorial was dedicated on June 27, 2003, and was a joint project of the Idaho Governor's Lewis and Clark Trail Committee and the Montana Lewis and Clark Bicentennial Commission. Ambrose was honored for his efforts to promote the bicentennial, and, more specifically, for his assistance in the efforts to purchase and preserve the Corps of Discovery's Glade Creek campsite, near the visitors center, which is now managed by the Idaho Department of Parks and Recreation.

The artwork on the bronze memorial was completed by Agnes Vincen "Rusty" Talbot of Boise who was also the sculptor on the new Sacajawea monuments recently installed in Boise and Salmon. The moving words on the plaque were written by Idaho Governor's Lewis and Clark Trail Committee member Jim Fazio.

Stephanie Ambrose-Tubbs, Governor Dirk Kempthorne, Beryl DeBoard, chair of the Idaho Governor's Committee, and Hal Stearns, chair of the Montana Bicentennial Commission, all spoke at the ceremony. Mrs. Ambrose was also at the event. DeBoard presented Rusty Talbot with a framed, personalized bicentennial license plate as a thank you for all of her hard work on behalf of the Committee. \*

## WEIPPE DISCOVERY CENTER OPENS

On October 14, 2003, the Weippe Public Library officially opened its doors in its new home, the Weippe Discovery Center. Moving day began October 3 and continued throughout the weekend with help from library staff and the community. During the following week the staff and volunteers helped install newly painted shelves and began the task of reshelving books. The majority of the library was back in order just in time for a visit from State Librarian Charles Bolles and the State Library Board of Directors on October 9.

Telecommunications and networking tasks were completed and computers installed in the library as well as the expanded Technology Center. An open house with a potluck dinner in the new kitchen facility helped welcome the community. City of Weippe Mayor Norm Steadman provided the evening's entertainment.

The Weippe Discovery Center is now nearly complete and ready for bicentennial tourists and seasonal visitors. The exterior murals portraying the Lewis and Clark expedition through Idaho are half completed. They will be finished next spring. The Lewis and Clark living landscape display has trails winding throughout the grounds with plants and descriptive plaques. The interior is ready to meet the needs of the community with its library, technology center, college outreach center, and small business enhancement center. The Governor's Committee has helped to support the landscaping and exterior murals components of the project. \*

## TEACHERS' WORKSHOPS SPONSORED

As a salute to the Lewis and Clark bicentennial, the Idaho Chapter of the Lewis and Clark Trail Heritage Foundation (LCTHF), in cooperation with the Idaho Department of Education (IDE) and the Idaho State Historical Society, sponsored 2-day workshops for thirty teachers in Salmon in 2002 and at Lolo Pass in 2003. The purpose of the workshops was to introduce teachers to a Lewis and Clark resource guide that is published by the Foundation, to have them write lesson plans applicable to the age group they teach, and to provide field trips so they could experience the trail first hand. The tangible result for the two workshops will be a compilation of the lesson plans by IDE, which will be shared with social studies teachers statewide. Funding was provided by grants from the National Park Service Challenge Cost Share Program and the Idaho Governor's Lewis and Clark Trail Committee.

"Both workshops offered a variety of speakers and a glimpse of the many agencies and individuals involved in the Lewis and Clark Trail network," said Anne



*Rose Ann Abrahamson, Lemhi Shoshone, presents the Native American perspective on the Expedition. [Photo courtesy of Anne Schorzman]*

Schorzman, president of the Idaho Chapter and a member of the Governor's Committee. The facilitators for the workshops were from the LCTHF and the National Park Service. Lemhi Shoshone tribal members and members of the Nez Perce tribe talked about their side of the story. Lewis and Clark scholars came as guest speakers from the Foundation and governmental agencies such as the US Forest Service, BLM, and Nez Perce National Historic Trail. Local and county bicentennial coordinators helped in organizing the events. Teachers were entertained by first-person reenactments of Meriwether Lewis and Joseph Whitehouse. Senator Mike Crapo's

*Continued*

TEACHER'S, *continued*

Lewiston aide Mary Hasenoehrl was on hand at the conclusion of each workshop to present participants with a plaque of Idaho acknowledging the work and dedication of our educators.

The Salmon workshop focused on the historical aspects of the Expedition such as the importance of keeping a journal. Teachers created their own journals and wrote in them during their field trips, which included going to Most Distant Fountain Spring and over Lemhi Pass to First Taste of the Columbia. They returned to Lemhi Pass Saddle for lunch and a presentation of a traditional Lemhi Shoshoni ceremony by Rose Ann Abrahamson. They then went to the Flag Unfurling Site and heard the story about meeting the Shoshone.

At Lolo, the emphasis was more on the scientific aspects of the journey. The participants had a presentation on how Clark did his mapping. Each teacher was given a compass to create a map of their own during one of the field trips. They also created journals that they wrote in so they could share the experience with their students. On the first day, the group visited sites on the Montana side, Traveler's Rest being one of the highlights. On the second day, they went to the Lolo Pass Visitors Center and hiked into the Glade Creek Campsite. "Some got a glimpse of Packer Meadows and the more adventuresome hiked the portion of the Trail from the Packer Meadow site over the hill to Highway 12," noted Schorzman. An evening around the campfire with a Nez Perce elder highlighted the Nez Perce oral traditions about the white-man's exploration of their homeland. \*



Teachers from around the state put together a format for their journals. [Photo courtesy of Anne Schorzman]

IDAHO MUSEUMS  
SUPPLY ARTIFACTS

When the Missouri Historical Society and the Public Broadcasting System (PBS) recently needed artifacts, two Idaho historical museums located along the Lewis & Clark Trail came to their aid. The Historical Museum at St. Gertrude, Cottonwood, provided several artifacts from its collection to PBS to be featured in a 60-minute segment of the *American Experience* series. The particular segment in which



1923 Marchant Model EEG9 electric pinwheel calculating machine loaned to PBS by the Historical Museum at St. Gertrude. [Photo courtesy of the Historical Museum at St. Gertrude]

the artifacts are featured explores the history of the construction of the Golden Gate Bridge and will air on area public television stations this spring.

Initial contact by PBS was made through Lewiston business machine collector, Ernie Jorgenson. The historical museum has on display a number of office

machines, typewriters and calculators that have been donated by Jorgenson. The display contains a number of rare machines, including a Dactyle calculator made in Paris in 1905 that may be one of only two in existence, as well as a Millionaire calculator made in Switzerland in 1893.

The artifacts that "starred" in the production included a vintage calculating machine dating from 1923, a drafting set (ca. 1890), and a slide rule. The calculating machine is a Marchant Model EEG9 electric pinwheel machine made in Oakland, California, in 1923. The calculator is still in operating condition. Interestingly, documentation identifies the drafting set as one used by George Pierce, a chief engineer on the construction of both the Golden Gate Bridge and the Oakland Bay Bridge.

In 2002, the Nez Perce County Museum in Lewiston loaned a *liickaw* from their Stranahan Collection to the Missouri Historical Society to be included in the National Bicentennial Exhibition, which opened in St. Louis in January. A *liickaw*, pronounced, "leets-kow," is a traditional Nez Perce basket hat. The *liickaw* loaned to the Missouri Historical Society, made of beargrass and hemp, is unusual in that it was apparently made for a child, being only six inches or so at its widest point. From its top hang elk skin strips decorated with dentalia shells. While the history of the hat is not definitely known, it is representative of a garment that would have been worn during the time Lewis and Clark passed through Nez Perce country.

\*



Child's *liickaw* loaned to the Missouri Historical Society by the Nez Perce County Museum. [Photo courtesy of Nez Perce County Museum]



## SUMMER OF 2003 VISITATION

It's too early for hard, empirical evidence, but following the first summer of the bicentennial, anecdotal reports from individuals involved with the bicentennial indicate an increase in visitation numbers. "First and foremost," says Doreen Krabbenhoft, Executive Director of the Lewiston Chamber of Commerce, "we do know that the Lewis & Clark bicentennial is attracting more visitors to the area. The statistics from the state tax office show that our receipts of 2% lodging tax revenues has increased over the last couple of years when other areas were dropping after September 11. We believe this is greatly due to more automobile travel and that many of those travelers are selecting this area to come to because of the Lewis & Clark bicentennial."

Clyde Hanson of Grangeville's Bicentennial Historical Museum reports "quite an increase" in the number of visitors to his museum over the Fourth of July week-

*Ruth [May] also notes a difference in the "demographics" of travelers; they "clearly fit the 'heritage tourist' profile," she says.*

end, a total of 227 over the three-day holiday, with three visitors from Italy and three others from Korea. The numbers are also up in Pierce, according to Don Rayner of the J. Howard Bradbury Logging Museum. "Our museum experienced a threefold increase in tour group attendance while our regular attendance remained approximately the same. Our tour groups increased from three to 10." Don credits the increase in tour group visitation to better publicity through the *Museums Along the Trail* Brochure, produced by the Idaho Governor's Lewis & Clark Trail Committee, as well as improvements in the museum's cataloging.

"Visitors are definitely here for the Lewis & Clark bicentennial and many are finding that the Salmon area is one of the best natural experiences for history and culture," comments Gary Van Huffel, Coordinator for the Sacajawea Center in Salmon. He reports that of the 4,000 visi-

tors who signed the Interpretive Center guest book, "there were visitors from 48 states and 16 different countries." The number of visitors per day averaged between 100 and 150.

Surveys recorded by BLM Salmon Field Office Park Rangers Terry Whittier and Mike Crosby reveal a 12% increase in the number of Lewis and Clark visitors who traveled to Lemhi Pass in 2003, compared to 2001 and 2002. Mike says, "Between the hours of 9:00 a.m. and 5:00 p.m. daily, there was an average of 6.2 people per hour. That equates to about 50 Lewis and Clark enthusiasts per day and a seasonal total of 6,450 visitors from late May through the end of September. If you add the Lewis and Clark visitors who came over the pass before and after these hours, the season total of Lewis and Clark visitors would be over 7,000. The total number of visitors who came over Lemhi Pass in the 2003 season increased by 14% to over 11,000 people."

Ruth May, Coordinator of the Upper Clearwater Lewis & Clark Bicentennial Committee, and owner of Reflections Inn, a bed-and-breakfast on S.H. 12 near the Middle Fork of the Clearwater, reports that, while she does not have specific statistics, "it is evident that we are experiencing an increase. The percentage of people who are here to explore Lewis & Clark history is clearly higher than in the past." She adds, "The other notable trend is the level of knowledge visitors already have of the Lewis & Clark Expedition prior to their visit. Folks are no longer asking where the Trail is but are requiring much more in-depth expertise." Ruth also notes a difference in the "demographics" of travelers; they "clearly fit the 'heritage tourist' profile," she says.

John Barker, owner of Barker River Trips, on the other hand, has not seen a significant increase in his business; although, he says, people are showing interest in the one-day floats of the Clearwater that he promotes as "float where Lewis and Clark floated." Despite the initially disappointing numbers, John believes Idaho's attractions will keep travelers coming back. "I see the activities I have planned as a tool

to add folks to our regular 3-4-5 day float trips on the Salmon and Grande Ronde rivers and as a way to get returning guests to fish the Clearwater in Steelhead season," he explains.

Some museums along the Trail may not have experienced increased visitation, but the bicentennial has nonetheless made a



*In the Spring of 2001, representatives from state and federal agencies and tribes gathered on Lemhi Pass to help plan for facilities improvements there for the bicentennial. The Pass is now experiencing an increase in visitation as the bicentennial has begun.*

difference for their institution. Jane Herwegh and Lora Feucht of the Nez Perce County Historical Society and Museum in Lewiston report, while there was only a small increase in visitors in 2003, visitors are "staying longer, up to three times as long, and are leaving more money in the donation box." Lora believes improvements to the museum, which were financed by funds from the Governor's Committee Museums Initiative, explain why visitors are staying longer and donating more.

As the bicentennial moves into its second year, the Idaho Department of Parks and Recreation plans to expand its collection of visitation statistics. Jennifer Couture, Communication Program Manager, reports that in 2003 the department established the Outdoor Recreation Center. In 2004, the Center will do "at least one statewide visitor survey in Idaho's state parks, as well as one statewide and six regional outdoor recreation surveys of Idaho residents," she says. "We plan to include a component in those surveys to help us assess the impact of the Lewis and Clark bicentennial," she adds. \*

## BICENTENNIAL NEWS BRIEFS

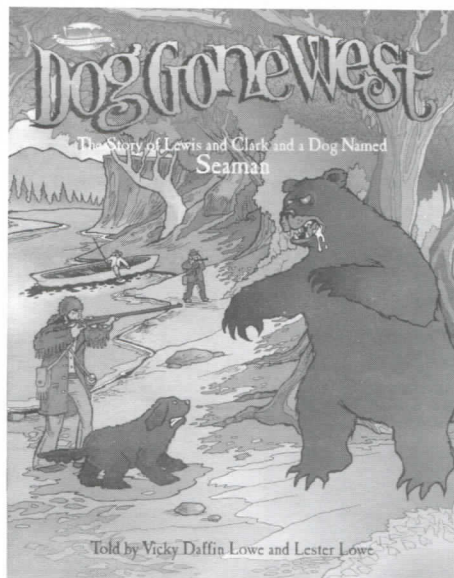
- Two exhibits were installed at the Lewis-Clark State College Center for Arts and History this summer, and will remain on view through 2006. "Since Time Immemorial: The Nez Perce" features artistic murals on the heritage of the Tribe prior to the coming of Lewis and Clark by Nez Perce artist Sarah Penny. "Seaman's Adventures with the Lewis and Clark Expedition" looks at the Corps of Discovery through the eyes of Lewis's Newfoundland dog, and features the artwork of Dennis Sullivan and Francis Conklin of Dog Bark Park in Cottonwood. This is a duplicate of the traveling Seaman exhibit that Dennis and Francis took to the national bicentennial kickoff in Virginia in January, 2003, where it was one of the most popular venues. For more information call 208-792-2243 or visit [www.artsandhistory.org](http://www.artsandhistory.org).

- Richard Smith of Salmon has published a beautiful new book, *Lewis and Clark in Lemhi County, Idaho: August 12-September 4, 1805*. The book recounts the story of the Corps of Discovery in Lemhi County on a daily basis, including some journal quotes. It also includes color photographs of the places they visited, taken at the same time of year that the Corps passed through. The paperback book sells for \$19.95 and is available from Richard Smith, 411 Courthouse Dr., Salmon, 83467, 208-756-6768.

- North Central Idaho Travel Association has released its long-awaited illustrated children's booklet, *Dog Gone West: The Story of Lewis and Clark and a Dog Named Seaman*. Written by Vicky and Lester Lowe of Riggins, the booklet is now available at \$4.95 from NCITA at P.O. Box 2018, Lewiston, Id., 83501, 888-628-3320.

- The University of Idaho Library has just published its contribution to the LC Bicentennial, *In Nez Perce Country: Accounts of the Bitterroots and the Clearwater After Lewis and Clark*. Compiled and edited by UI librarians Lynn and Dennis Baird, the book includes several interpretive essays as well as dozens of rare first-hand accounts, many

appearing here for the first time, collected from archival sources throughout the United States and Canada. The book sells for \$16.95 and is being distributed to the book trade by the University of Idaho Press, 800-847-7377.

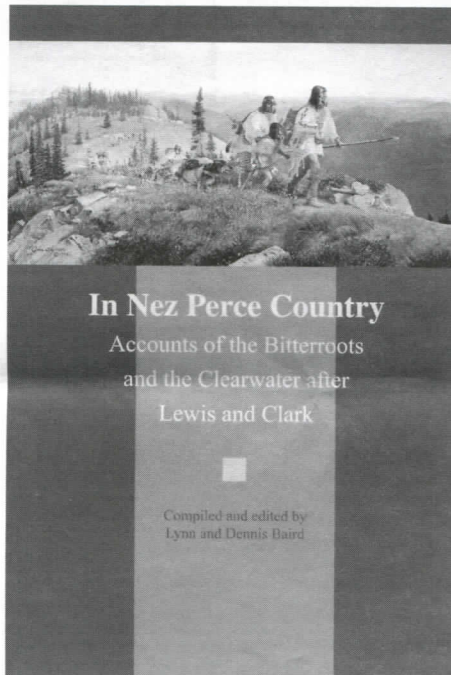


- Farcountry Press, P.O. Box 5630, Helena, Mt., 59604, 800-821-3874 has been publishing some elegant and very useful books that will be of interest to Idahoans. A. Scott Earle and James L. Reveal, *Lewis and Clark's Green World: The Expedition and its Plants*, is arranged chronologically, following the Corps of Discovery along the journey. Each species appears in sequence of its first encounter and the authors discuss where and when Lewis gathered the plant, offer quotes from Lewis's journal about the species, provide a botanical description and cultural information about how Indians or Expedition members used the plant, and give an overview of what we know about the plant today. The 256-page book has four chapters that include Idaho and its plants. Each plant described includes a beautiful color photograph. \$34.95, hardcover. Robert Moore and Michael Haynes, *Lewis and Clark: Tailor Made, Trail Worn: Army Life, Clothing and Weapons of the Corps of Discovery*, has rapidly become the Bible for reenactors. This is the definitive work on clothing and accouterments used by Lewis and Clark. Breeches, pantaloons, vests, jackets, caps, frocks, footwear, and weapons are just some of

the items covered. Beautiful original paintings and drawings by Haynes, many in color, offer imagery to complement the text. \$39.95, hardcover. Farcountry previously published David J. Peck's *Or Perish in the Attempt: Wilderness Medicine in the Lewis & Clark Expedition*; Barbara Fifer, *Going Along with Lewis & Clark*; and Barbara Fifer, *Lewis & Clark Expedition Illustrated Glossary*, the latter two aimed at school-age readers.

- On November 16 *The Idaho Statesman* published a 52-page supplement entitled *Sacajawea: Her Story by Her People*. The work was written by the *Statesman's* Tim Woodward, and features stories of Sacajawea as recalled by Lemhi Shoshone, as well as a history of the Lemhis.
- Several new brochures are available, some from Idaho, and all of interest to Idahoans. *Discovering the Legacy of Lewis and Clark* is the title of a new commemorative brochure and map created as a partnership of more than 20 federal agencies. The map highlights the entire trail. Contact: Keith Petersen, 208-792-2249. *Highway 12: A Long and Winding Road* describes things to see and do along the Lewis and Clark Highway. It is published by the Clearwater National Forest and is a companion to the Forest's brochure, *Lewis and Clark on the Lolo Trail*. Contact: Clearwater National Forest, 208-476-8245. The National Council of the LC Bicentennial has released its brochure on bicentennial signature events. All 15 national signature events, including the Nez Perce Tribe's in June 2006, are highlighted, as is additional information about the Council and its advisory groups. Contact: National Council, 888-999-1803. *Discover the Nez Perce Trail Auto Tour* has been published by the Nez Perce National Historic Trail. It highlights historic sites of the Nez Perce conflict of 1877 along Highway 12 in Idaho and Montana, and along the Lolo Motorway. In many places the Nez Perce Trail and the LC Trail are the same. Contact: Nez Perce Nat. Hist. Trail, 208-476-8334.

- For the first time ever, the state of Idaho provided the national holiday tree for the national capitol. The tree was decorated with ornaments by Idaho school children. Nearly 2,000 Lewiston students made ornaments, some of them with a Lewis and Clark theme, financed by a contribution of discretionary funds to the project by the Idaho Governor's Lewis and Clark Trail Committee.
- Carmela Winery of Glens Ferry has recently come out with three new labels commemorating the LC Expedition in Idaho, a Chardonnay, Merlot, and Blush. The grapes for all the wines are grown in Idaho, where the wine is made. It is tasty stuff! For further information contact the winery at 208-366-2313, or [www.carmelavinyards.com](http://www.carmelavinyards.com).
- Victoria Scalise resigned as the Clearwater Economic Development Association's Clearwater region bicentennial coordinator. Victoria had served in the position for three years, and was instrumental in administering the Governor's Committee Bicentennial Community Grants Program, as well as coordinating the Bi-state Bicentennial Public Safety Program. Jenni Schacher at CEDA has replaced Victoria on the grants and public safety programs.
- The U.S. Forest Service and several other cooperating agencies and organizations have produced a beautiful new placemat featuring an original painting of Lewis, Clark, and George Drouillard as they stand below the Tower Creek "pirimids" in Lemhi County on August 31, 1805. Text and drawings on the placemat detail three plants LC observed along Tower Creek, and three weed species that have invaded the area since. The reverse side features native and noxious plant species that can be colored and a "noxious weed word scramble" to help entertain kids. The placemats are designed to help educate the public about the invasive nature of noxious weeds and the threats they pose to native species. The placemats are being made available to dining facilities in the Lemhi County area.
- The Lemhi County LC Bicentennial Committee partnered with the City of Salmon and the Idaho Department of Lands Community Forestry Program to complete new entry signs for the city. Featuring images of Lewis, Clark, and Sacajawea, the signs sit on a rock base and have the words, "Welcome to Salmon: Birthplace of Sacajawea, on the River of No Return." The signs are located at two entrances to Salmon, and were supported by funding provided by the Governor's Lewis and Clark Trail Committee.



- Governor's Committee funding also assisted the City of Lewiston Department of Parks and Recreation in developing five new interpretive signs in Kiwanis Park on Snake River Avenue. The panels explore the history of life along the Snake River, including the role of Lewis and Clark and the Nez Perce.
- The U.S. Army Corps of Engineers has also installed new interpretive signs in Lewiston, at the Lewis and Clark information center on the levee at the confluence of the Snake and Clearwater rivers. The signs depict the role of Lewis and Clark in the area, as well as the Nez Perce.
- On March 11, 2004, Idaho Public Television will premier its new documentary,

"Lewis and Clark: Crossing the Centuries." It will be the third in a series of three documentaries about LC in Idaho. "Echoes of a Bitter Crossing: L and C in Idaho," and "The Journey of Sacagawea," having come previously. "Sacagawea" and the latest show were partially funded by the Governor's LC Trail Committee. Link to [www.idahoptv.org/lc](http://www.idahoptv.org/lc) to find the latest information about the explorers' journey through Idaho. The site has been updated with links to Idaho sites and resources. PBS has also enhanced its national website at [www.pbs.org/lewisandclark](http://www.pbs.org/lewisandclark). To order any of the Idaho Public TV videos, call 877-224-7200.

- The Idaho Travel Council, in collaboration with travel councils in Oregon, Washington, and Montana, has produced a new rack card featuring the region's four national signature events, as part of a larger collaborative advertising campaign that has been ongoing for more than a year. Visit [www.nwlewisclark.com](http://www.nwlewisclark.com) to learn more about what the four states are doing collaboratively. For Idaho bicentennial information specifically, visit [www.lewisandclarkidaho.org](http://www.lewisandclarkidaho.org).
- "The Lewis and Clark Bicentennial Commemoration....Making a Difference for Idaho" details the \$2.1 million the Idaho Governor's LC Trail Committee and the Idaho State Historical Society's LC Information Center have invested through August 31, 2003 in bicentennial projects throughout the state. Each project that has been funded is noted, along with the amount. The report is broken down by communities (\$211,488 for Kamiah/Kooskia; \$392,641 for Lewiston; \$252,917 for Salmon, etc.). If you would like a copy contact Keith Petersen at 208-792-2249, [keithp@lsc.edu](mailto:keithp@lsc.edu).
- Boise will host the National Academic Decathlon. The national decathlon "Super Quiz" will feature the L and C Expedition as the topic for in-depth student research, with written and oral competition culminating in the nationals in Boise, April 14-17, 2004. While

*Continued*

BRIEFS, *continued*

students from throughout the nation are visiting Boise, they will participate in a cultural day that will introduce them to the story of LC in Idaho. For more on the decathlon contact Jerry Helgeson at P.O. Box 9312, Boise, ID. 83707.

- Both the Idaho Humanities Council and the Clearwater-Snake LC Bicentennial Committee support LC Speakers' Bureaus, partially supported by funding from the Governor's Lewis and Clark Trail Committee. If you are looking for a Lewis and Clark program, you can get speakers through the bureaus on a wide range of topics, such as "Walking the West with Sacajawea," "Lewis and Clark: Their Boats and Boatmen," "The Corps of Discovery in Eastern Idaho," "Meriwether Lewis, Letters Home," "Lewis and Clark in Nez Perce Country," "A Nez Perce Elder Meets William Clark," and a variety of other topics. For more information contact the Idaho Humanities Council, 888-345-5346, or Clearwater-Snake LC Bicentennial Committee at 208-935-7636. \*

## UPCOMING BICENTENNIAL MEETINGS AND EVENTS

**"Discovering Idaho: The World of Lewis and Clark,"** Feb. 17-Sept. 6, 2004. Exhibit at Museum of Idaho, Idaho Falls. (Contact Nick Gailey, 208-522-1400, ext. 3004.)

**National Academic Decathlon,** with Lewis and Clark theme, meets in Boise, April 14-17, 2004. (Contact Jerry Helgeson, P.O. Box 9312, Boise, Id., 83707.)

**Idaho Governor's Lewis & Clark Trail Committee meeting,** Orofino, April 24, 2004. (Contact Keith Petersen, 208-792-2249.)

**U. S. Postal Service First Day of Issue,** New postage stamp, Orofino, May 14, 2004. (Contact Keith Petersen, 208-792-2249.)

**Lewis and Clark speakers series** commences at Idaho Botanical Garden, Boise with Mike Venso on May 18. Series continues through Sept. 21, 2004. (Contact Idaho Botanical Garden, 208-343-8649.)

**Third Annual Camas Festival,** Weippe, May 29-30, 2004. (Contact Marge Kuchynka, [mkuchynka@hotmail.com](mailto:mkuchynka@hotmail.com).)

**Sixth Annual LC Symposium,** "Two Centuries, Two Peoples: A Confluence of Histories," June 17-19, 2004, Lewis-Clark State College, Lewiston. (Contact LCSC Community Events, 208-792-2447.)

**Third Annual Lewis and Clark Discovery Faire,** Lewiston, June 25-27, 2004. (Contact Lewiston Chamber of Commerce, 208-743-3531.)

CLARKSTON WA 99403-3152  
 2039 CRESTVIEW DR  
 Steve Lee  
 10  
 \*\*\*\*\*AUTO\*\*MIXED AADC 836  
 |||

UNIVERSITY OF IDAHO  
 PAID  
 U.S. POSTAGE  
 STANDARD  
 PRE-SORTED

IDAHO STATE HISTORICAL SOCIETY  
 1109 MAIN STREET, SUITE 250  
 BOISE ID 83702