



# Idaho Chapter Newsletter

*Lewis and Clark Trail Heritage Foundation*

## Bicentennial Alive and Well in Idaho

Commemorating the 200<sup>th</sup> anniversary of Lewis and Clark's westward passage through Idaho has been a lively affair so far. From Sacajawea Heritage Days in Salmon, to the meeting of Clark with the Nez Perce on the Weippe prairie, to Canoe Camp in Orofino, to the display of original L&C botanical specimens at the Idaho State Historical Museum, Idaho's residents have welcomed the bicentennial in a number of ways. And the good news is that there is much more to come with the 2006 eastward journey. Chapter members Mike Venso and Carol MacGregor have given presentations at the ISHM and the Botanical Gardens. On behalf of the Chapter, special thanks go to Keith Petersen, Idaho Bicentennial Co-coordinator and to all of the volunteers statewide who are spending endless hours to make these events happen.

Sacajawea Heritage Days kicked-off August 12 with a beautiful ceremony on Lemhi Pass. It's hard to believe that it was 200 years ago on this date that Meriwether Lewis first stepped into Idaho. Along with Corps II many speakers and performers, the 10-day event in Salmon included the reenactment of when the Corps met the Lemhi Shoshone. About 500 people attended. The event was marred by the tragic automobile accident death of the granddaughter and son-in-law of Roseann Abrahamson, lateral descendant of Sacajawea, so an honoring ceremony for Sacajawea had to be cancelled.

Chapter members Charlie Knowles, Carol McGregor, Gib Floyd, Suzi Neitzel, Larry Jones, Ruthann Caylor and Anne Schorzman were a few of the faces seen at a Governor's Committee hosted

evening dessert at the amphitheater. The evening dessert was really a thank you to more than 100 people who have worked for years to bring about the Sacajawea Center, the commemoration events and the other lasting legacies of the bicentennial.

As the Corp moved over the Bitterroots, so have the bicentennial activities. The main site of activity from Sept. 16-26 was Kamiah. School children were bused in (funded by the Governor's Committee) and were able to participate in presentations by Dog Bark Park, US Fish and Wildlife, BLM and many more. The Tent of Many Voices and the new Kamiah amphitheater was host to L&C scholars and Chapter members Carol MacGregor, Carole Simon Smoliski and Jim Fazio. Performers included York, Pierre Cruzatte, Charbonneau and George Shannon.

One well-planned and downright thrilling event was when the Corps met the Nez Perce on the Weippe prairie on Sept. 20<sup>th</sup>, 200 years to the date later. Re-enactors from the Discovery Expedition of St. Charles, and the Hog Heaven Muzzleloaders met members of the Nez Perce Tribe. Bud Clark, direct descendent of William Clark, met a Nez Perce woman who was a direct descendent of Watkuweis. About 250 locals and visitors accompanied by 150 students walked from the town of Weippe out to the site, about 2.5 miles. The Nez Perce tipis were set up in a harvested wheat field. Our own Chuck Knowles was the master of ceremonies and he did a great job connecting with the students and the adults. Clark and his contingent came into the site first followed by Lewis a bit later. Chuck talked about the exchange between the two cultures. Toward the end of the ceremony, Clark presented an American flag to the Nez Perce which was draped over the shoulder of one of the tribal members.

The last of the building of the five dugouts in Orofino is happening through October 7<sup>th</sup> at

October 2005  
A Bicentennial Year

Canoe Camp. The Hog Heaven Muzzleloaders and Discovery Expedition of St. Charles are encamped there. They will take off down stream in the five dugouts, to arrive at Chinook Park near the Pacific Ocean in time for the Destination the Pacific national signature event in November.

Another don't miss bicentennial exhibit is taking place in Boise, a non-Trail location. The ISHM is host to original L&C botanical specimens, on loan from the Academy of Natural Sciences of Philadelphia. The specimens were collected by Lewis and Clark while in Idaho. Because of their fragile nature, only four are allowed on exhibit at one time in the museum. The first set of four, which included the camas plant were on display from May through August, 2005. The second round of specimens came the first of September (it includes bear grass and chokecherry) and will be on display through December 2005. The museum will exchange four specimens every four or five months through May of 2006.

The ISHM exhibit will be one of the cornerstones of the commemoration that will be held in Boise May 20-29, 2006. Boise's Cultural Network will host speakers, exhibits Corps II and will set up in Julia Davis Park. Boise organizers expect many school children and residents of the area to attend.

"Summer of Peace, Among the Nimiipuu, June 14-17 the Nez Perce hosted Signature Event, will be the final big extravaganza in Idaho. Come hither, Chapter members and join the fun..



## On-the-Trail Chapter Outing: Lolo Pass

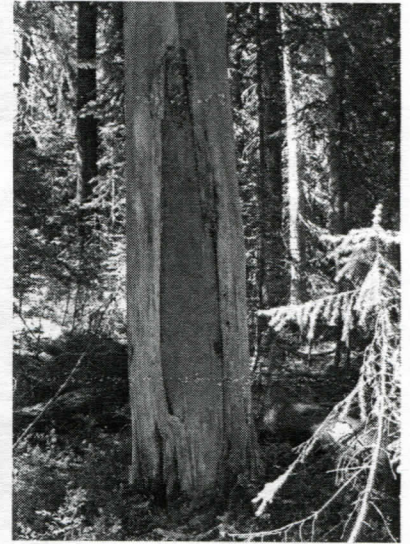
Gib Floyd, Chapter Pres., joined Chapter members from Washington and Idaho on Lolo Pass going from the top of the pass toward Wendover Ridge on June 18-19. Acting as co-tour leaders were Gene and Molly Eastman, who are very familiar with the Lolo and Nez Perce Trails.

As the gang hiked, they noted differences in the Trail including parts that had been logged recently. Logging in this historic area is of concern because the trail corridor needs to be protected to a reasonable extent. The group spent Friday night on Colt Killed Creek, which was descriptively named so by the Captains due to the lack of game encountered as the Corps journeyed down to the Kooskooskee River on September 14, 1805. This was the first of 3 or 4 colts that became part of mealtime on the Lolo section.

On Saturday, they hiked the Nez Perce Trail above Packer Meadows and saw peeled trees that were Lodgepole Pine. The Nez Perce peeled the trees to

mark the Trail so others would know the way. The trees are also an interesting record of Nez Perce history using peeled trees as directional markers and as a survival food source during lean times. Gib would like to arrange future outings so Chapter members could see these trees and experience the historical aspects of The Lolo and Nez Perce Trails. Members could possibly provide some needed assistance with worthwhile trail preservation work.

The group toured Lolo Visitor's center on Saturday night and Gene Eastman showed a slide-show about the Trail. Gene's slide show was an overview of the historic significance and multi-use considerations of the Trail. He made use of numerous views of the Trail that are not only beautiful but largely unseen by most of us. The outing was the first Chapter outing on the Trail in several years. It was exciting for the members to view the peeled trees and take home their stories of being back on the Trail.



*The Nez Perce peeled the trees to mark the trail so other would know the way.*

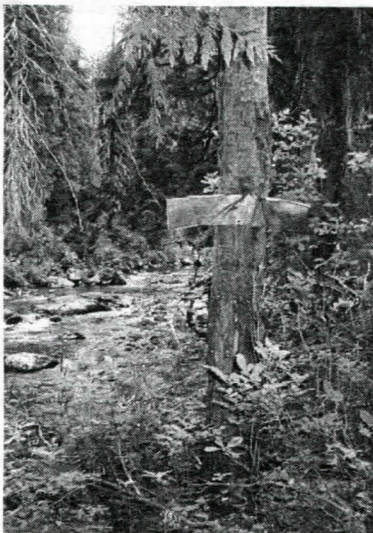


## President Explores Hungry Creek

In an effort to get experience on the Trail to share with Chapter members, Gib Floyd and Gene Eastman hiked eight miles of Hungry Creek, July 26-31, 2005. This area is well-noted in the journals and often talked about by Lewis and Clark nuts. The entire trip thru the "Hungry" Creek drainage was marked by lack of food and difficult travel and hasn't changed much in 200 years.

Gib and Gene, on their five day adventure, stayed at Jerusalem Artichoke camp where they saw four fire pits, two being very obvious. Some of the flora of the area included Noble Fir, Tamarack, Lodgepole Pine, old growth Cedars and lots of huckleberries. They saw deer, elk and dipper birds. They viewed a site that according to Horace Axtell, Nez Perce elder, is an Indian Burial site. Visiting the locations that are described by the Corps help to visualize the events that occurred there. Many 'Clarkies' would describe these on-site visits as being of a spiritual nature.

Gib noted that they forded Hungry Creek a total of eight times, knowing that near one of the crossings, Colter's horse slipped and he dropped his rifle and blanket. The incident about Colter and his horse falling is mentioned in a Journal entry on June 25 or 26. The exact location, of course, is not described but part of the mystique of the Trail is the variety of interpretations and use of the imagination in being close to where it took place. As they were walking through Hungry Creek they saw an aluminum sign (see photo) put there in the 1920's by the Forest Service. The sign was the only recent evidence that anybody had been in that area. According to Gib, "going on this adventure down Hungry Creek was a dream come true. I was right there, along with Lewis and Clark, understanding their feelings and their isolation."



*Aluminum sign on tree placed there by the Forest Service in the 1920's.*





## On the Trail with Gib ---Wendover Ridge

Part of the thrill of the bicentennial is participating in the historical events the exact day Lewis and Clark were there, only 200 years later. I experienced this with a hike up Wendover Ridge September 15, 2005. The previous afternoon I witnessed an interesting and informative program at the Lolo Pass Visitor Center. Re-enactors, mostly from the St. Louis area, but also some Idaho personalities including our own Chuck Knowles, mingled with the crowd and answered many questions from those attending.

My much anticipated trip up Wendover began at 7:45 a.m. on the fifteenth. It was on Wendover Ridge that Clark dropped and broke his desk. As most of you know, I've recreated his desk and sell them through my business, Idaho Woodcraft. I could hardly wait to be there on the same date as Clark. Although unmarked, the trail was in great shape. I enjoyed Elk bugling for probably the first three miles. Near the four-mile mark, I took a wrong turn following a sign indicating "water", which turned out to be the spring that Clark noted in his journal on September 15, 1805. After traveling an hour and twenty minutes in the wrong direction, I rejoined the actual trail.

Within 200 yards of the Lolo Motorway, I encountered a hiker coming down the trail. While we



were visiting, the Forest Service Wranglers and pack string came up the trail. They talked to us and we snapped some photos. I proceeded on to the Lolo Road, topping out near the Snowbank Camp sign at 2:30 p.m. Travel time on the correct trail was nearly six hours.

*Editorial note: For those of us left behind, we were concerned about Gib making it the "whole way". The rest of us are real proud of Gib and give him the honor of having the best explorer story in this issue.*

## Calendar of Events

*Now through December 2006.* Idaho State Historical Museum Exhibit on "Lewis and Clark in Idaho". View the original L&C botanical specimens from Philadelphia. Info: [aschorz@cableone.net](mailto:aschorz@cableone.net).

**October 1-9, 2005.** Lewis and Clark in Clarkston. Most venues at Port of Clarkston and Granite Lake Park.

**October 8, 2005.** Daniel Slosberg as Pierre Cruzatte performs in Moscow and Kendrick. Contact Latah County Historical Society, 208-882-1004.

**October 13, 2005:** Idaho Chapter Meeting at the home of Ruthann Caylor (see back page for directions), Boise, 6:00 pm. Chapter will provide pizza and drinks. Come meet Wendy Raney from the Foundation. Info: [gjfloyd@mindspring.com](mailto:gjfloyd@mindspring.com).

**November 11-15, 2005:** Destination the Pacific National Signature Event, Astoria, OR and Long Beach, WA. Visit: [www.DestinationThePacific.com](http://www.DestinationThePacific.com).

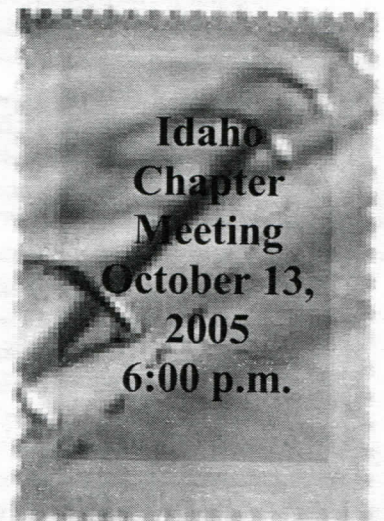
**January 14 or 15, 2006:** Idaho Chapter meeting, Boise, time and address to be determined. Info: [gjfloyd@mindspring.com](mailto:gjfloyd@mindspring.com).

**January 16, 2006.** Idaho Governor's LC Trail Committee meets in Boise. Info: [keithp@lcsc.edu](mailto:keithp@lcsc.edu).

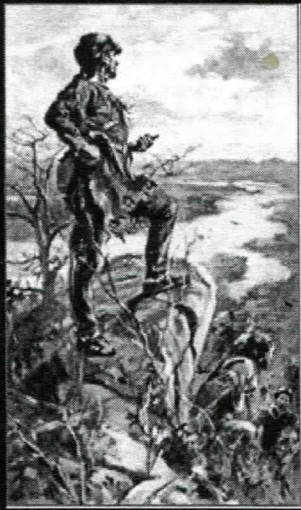
**May 20-29, 2006:** Circle of Cultures LC Bicentennial Commemoration, Boise. Info: [keithp@lcsc.edu](mailto:keithp@lcsc.edu).

**June 14-17, 2006.** Summer of Peace, Among the Nimiipuu National Signature Event. Visit [www.thesummerofpeace.org](http://www.thesummerofpeace.org).

**Sept. 18-20, 2006.** Annual LCTHF, St. Louis, MO in conjunction with the final Signature Event, **September 23-24, 2006.** Confluence with Destiny: The Return of Lewis & Clark, The Greater St. Louis Metropolitan Area. Visit: [www.lewisandclark.org](http://www.lewisandclark.org).







*Lewis and Clark  
Trail Heritage  
Foundation*

**Idaho Chapter Meeting  
October 13, 2005  
6:00 p.m.**

Directions to Ruthann Caylor's house, 319 Hulbe, Boise. If you're coming from downtown Boise, go south on 9th Street which turns into Vista. Stay in the Federal Way turn lane. As soon as you angle left onto Federal Way, turn left on Hulbe. Ruthann's house is the first one on Hulbe. If you're coming from I-84, take the Vista Ave. exit and follow it north until you get to Federal Way. Turn right onto Federal Way and take an immediate left onto Hulbe.



*An American flag (look closely at the Nez Perce male in the foreground) is draped over a Nez Perce (Allen Pinkham) as a sign of friendship between the Corps and the Nez Perce*

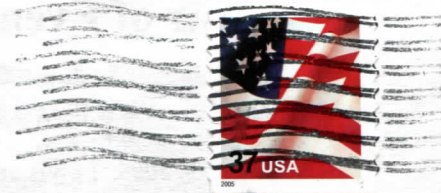


*Encampment of Discovery Expedition of St. Charles just outside the Weippe city park.*



*Keith Petersen smiling prior to the meeting of the Corps of Discovery and the Nez Perce.*

Idaho Chapter, LCTHF  
Gib Floyd, President  
3524 E. King Rd.  
P.O. Box 394  
Kuna, ID 83634



Steven Lee  
2029 Crestview Dr  
Clarkston WA  
99403